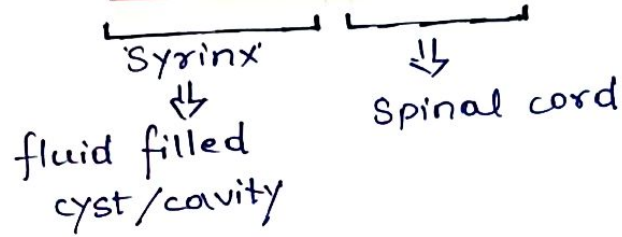
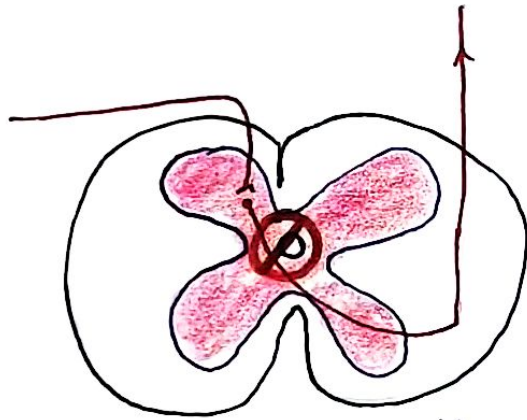


SYRINGOMYELIA



Formation of fluid filled cavity in central canal of spinal cord.



Nerves that cross the central canal are affected



ANTEROLATERAL SPINOTHALAMIC TRACT

Causes :-

- Congenital
- Acquired (tumors)
- Infections
- Trauma.

LOSS:-

- Anterior ⇒ Crude touch
- Lateral ⇒ Pain
• Temperature.