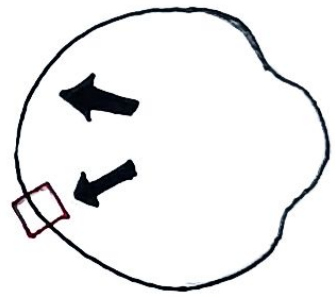
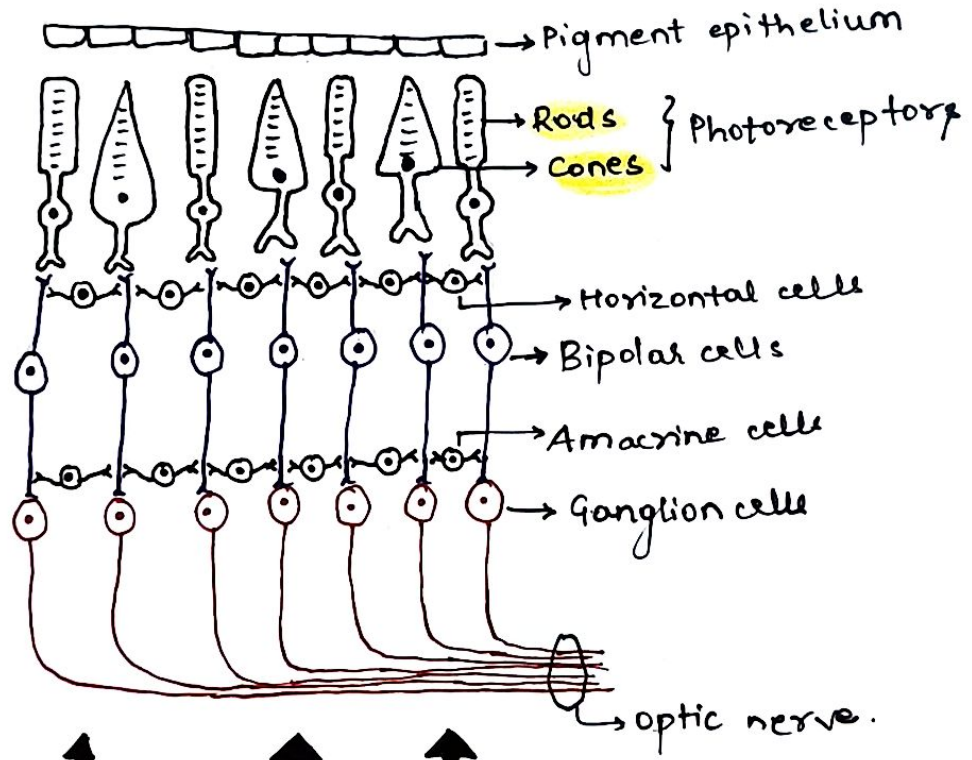


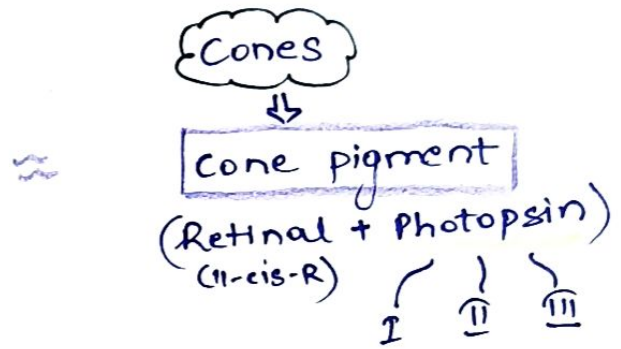
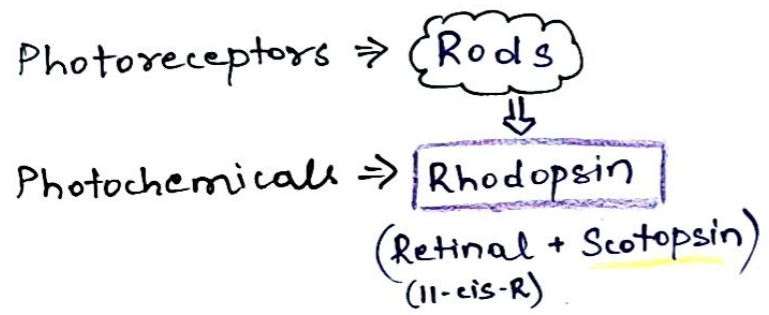
# PHOTOCHEMISTRY OF VISION

## # RETINA :-



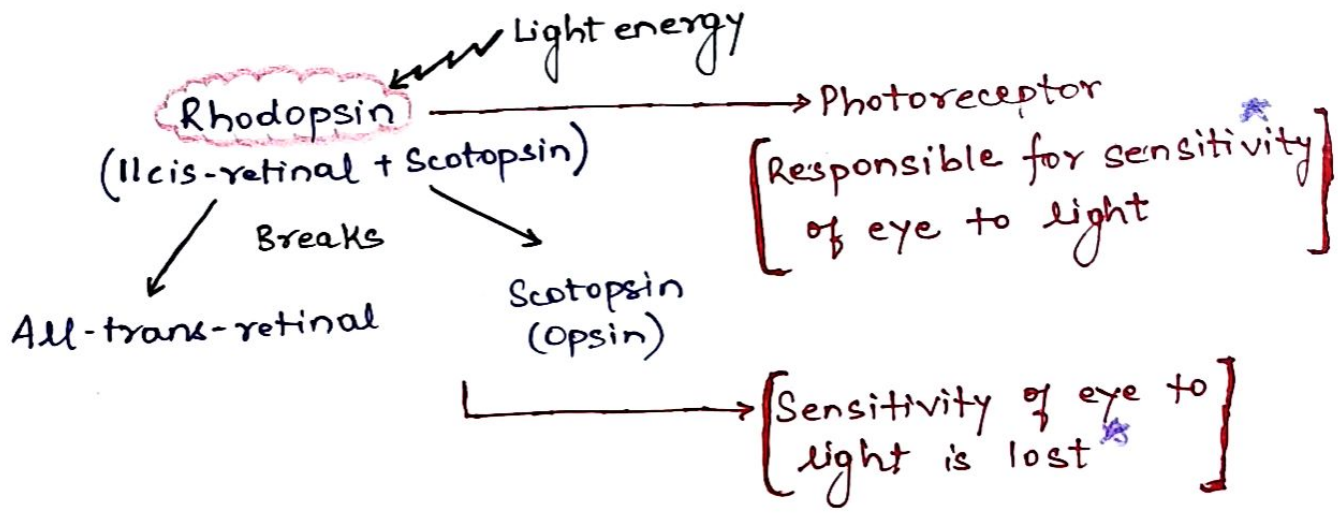
↑ ↑ ↑  
DIRECTION OF LIGHT

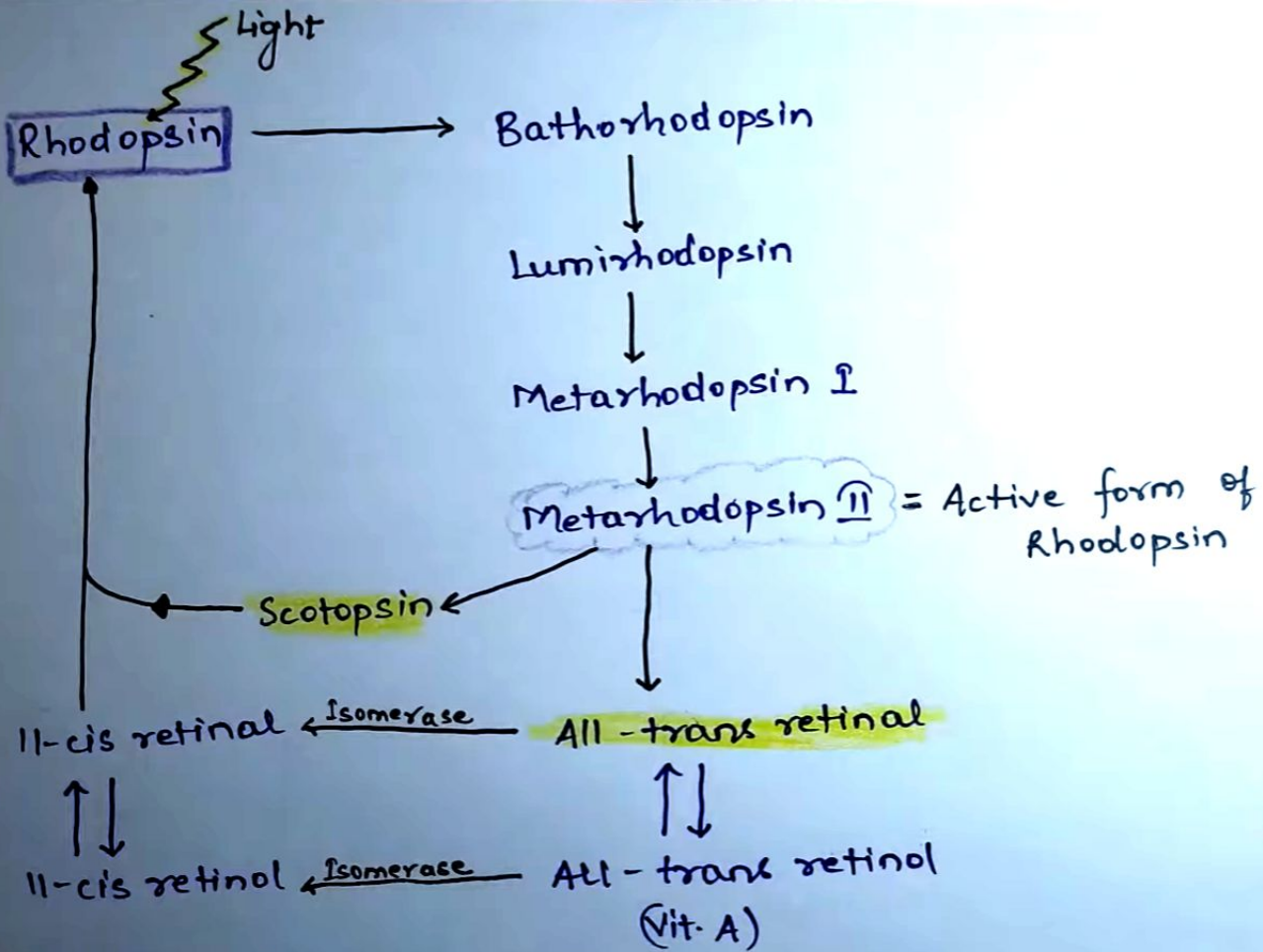
# # Photochemistry of Vision



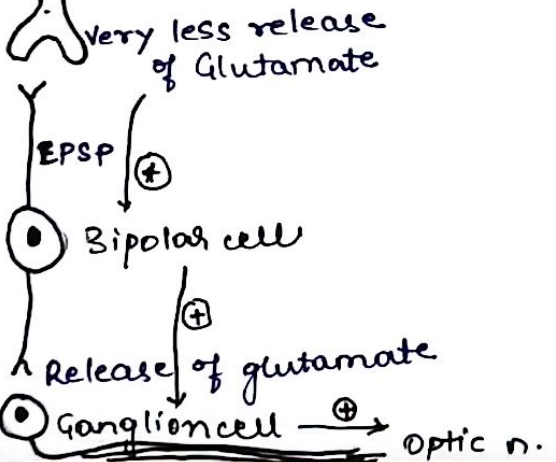
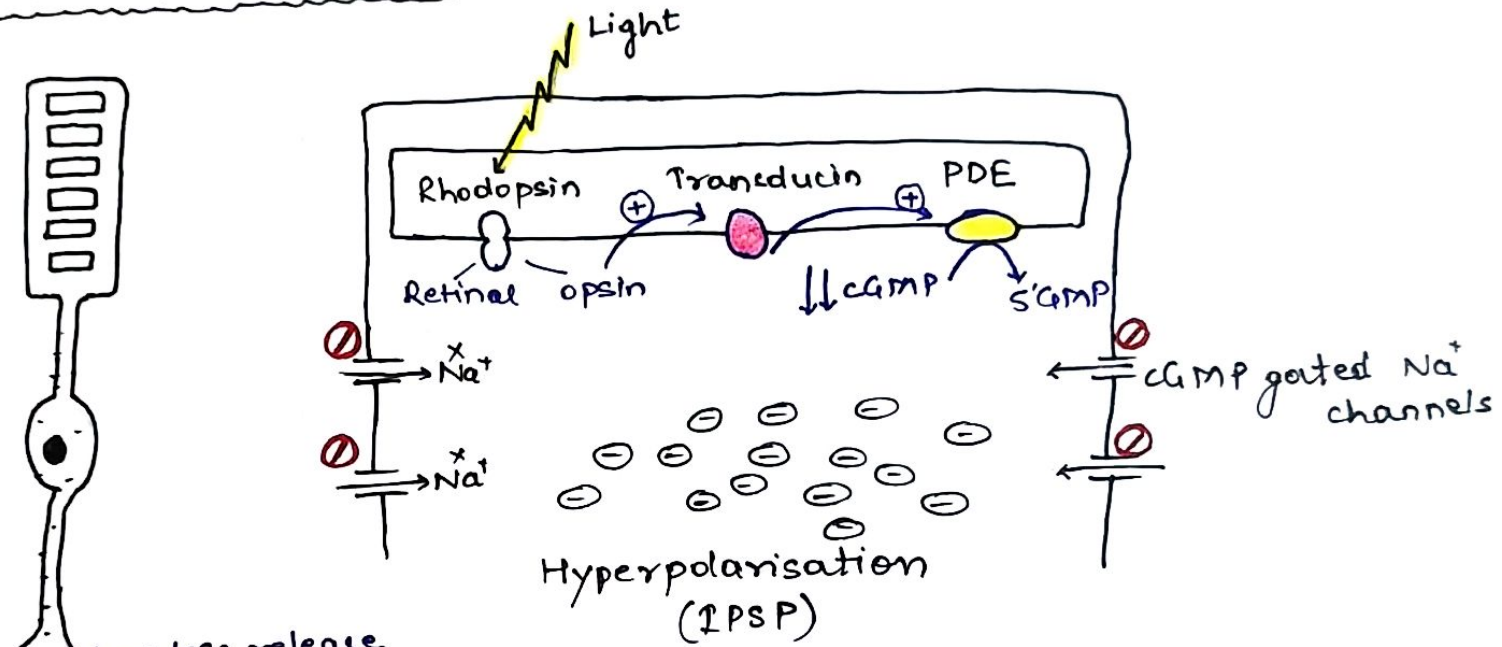
## VISUAL CYCLE :-

I should remember!





PHOTOTRANSDUCTION :-



Remember!  
Rod receptor potential  
is **HYPERPOLARIZING**

Light falls on photoreceptor (Rhodopsin)



Absence of light

Enzyme :- Rhodopsin kinase

Regeneration of rhodopsin

Transducin

Phosphodiesterase

5'GMP

cGMP

Hyperpol.  
(IPSP)

Na<sup>+</sup> channels  
closed