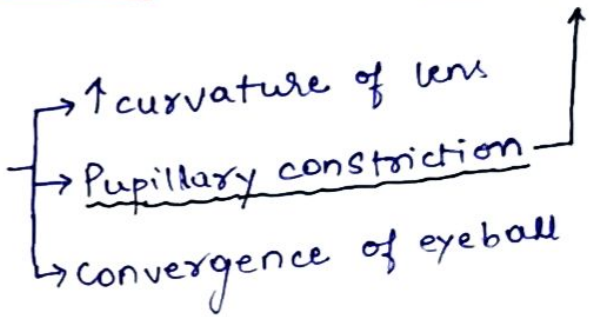


PUPILLARY LIGHT REFLEX

"Pupillary reaction to accommodation"

☑ Visual Pathway

☑ Accommodation Reflex Pathway



☐ Pupillary Light Reflex

Parasymp. nerves



Circular musc.
(Sphincter pup.)



Constricted pupil
(Miosis)



Normal pupil

Symp. nerves



Radial musc.
(Dilator pupillae)



Dilated pupil
(Mydriasis)

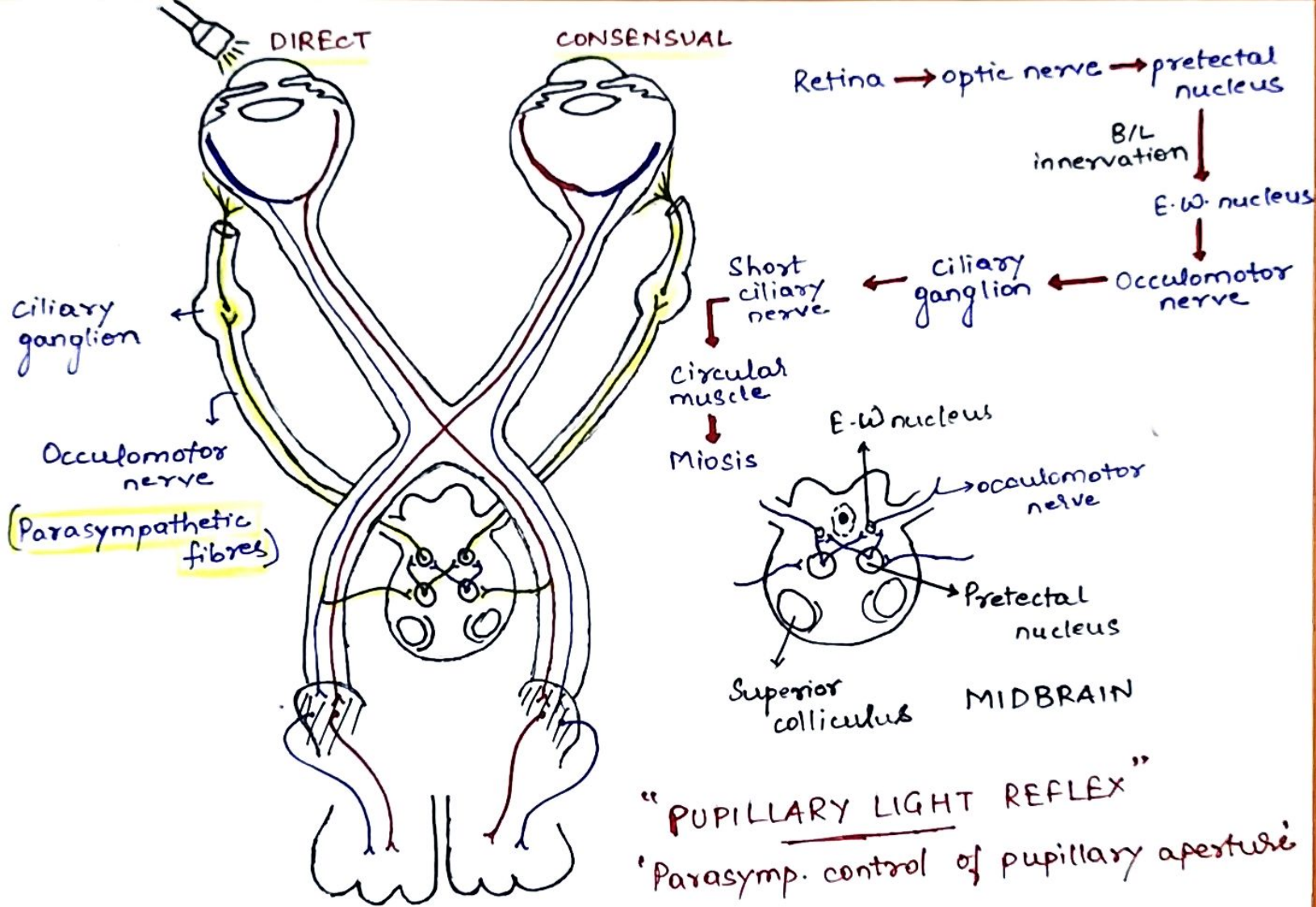


Iris

① Sphincter pupillae
(Circular muscle)

② Dilator pupillae
(Radial muscle)

Ciliary musc. 50



Dilates pupil

Radial muscles

Extraocular muscles

Sympathetic fibres

Carotid artery

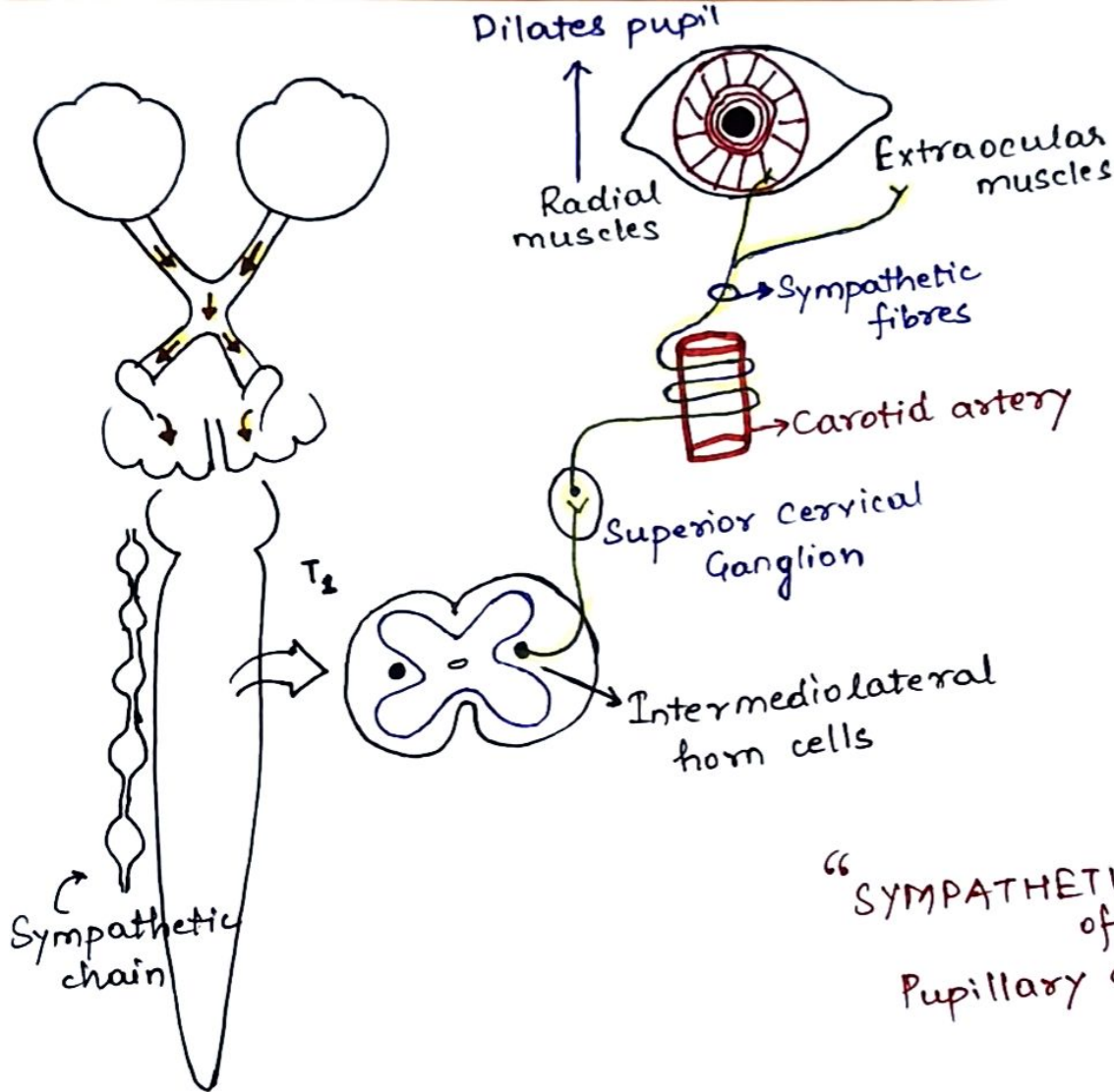
Superior cervical ganglion

Intermediolateral horn cells

T₂

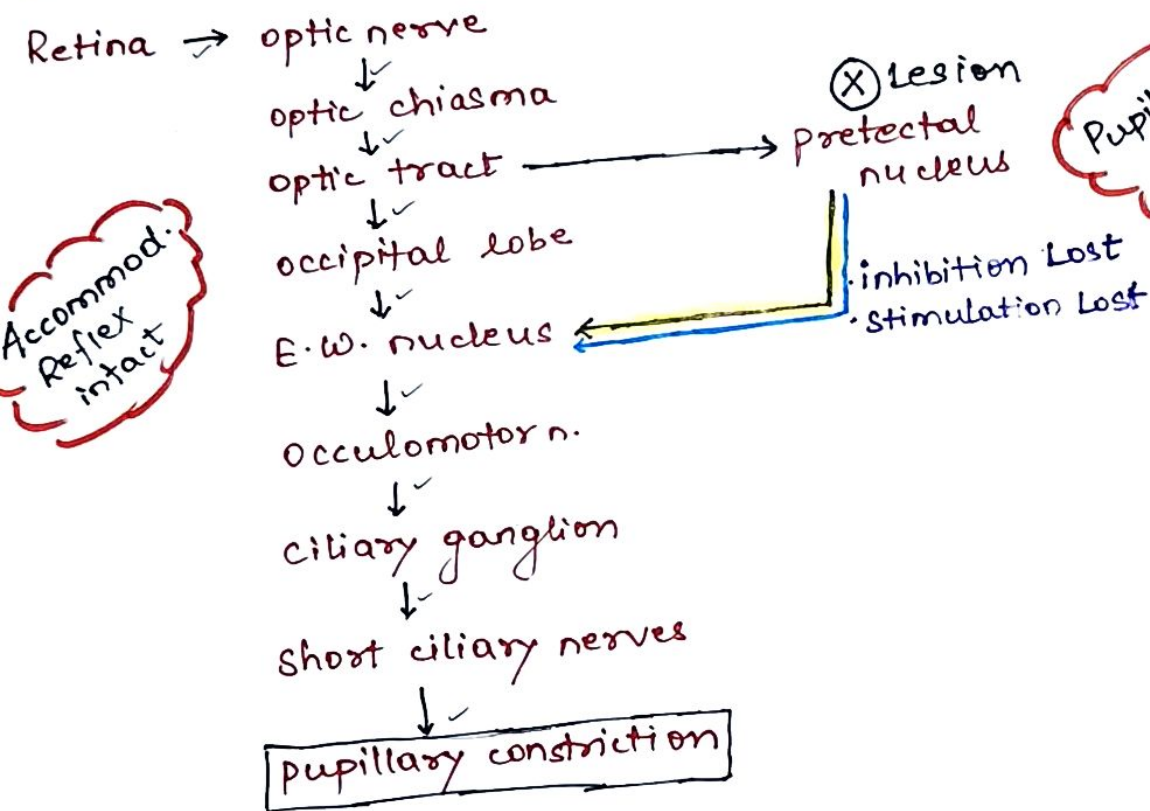
Sympathetic chain

“SYMPATHETIC CONTROL
of
Pupillary aperture”



Argyll Robertson Pupil (Associated \bar{c} Syphilis)

- ① Pupil size small
- ② $A \rightarrow R \rightarrow P$ Accommodation Reflex Present
- ③ $A \leftarrow R \leftarrow P$ Pupillary Reflex Absent.



Accommod.
Reflex
intact

Pupillary Light
Reflex
absent