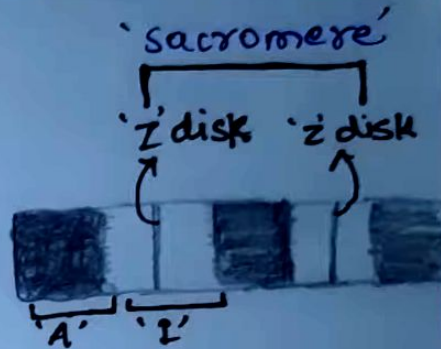
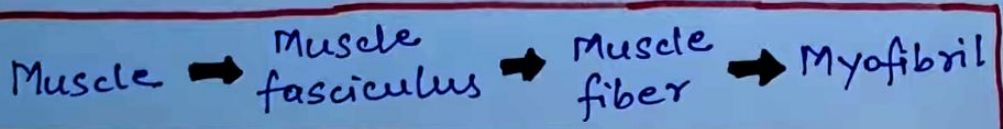
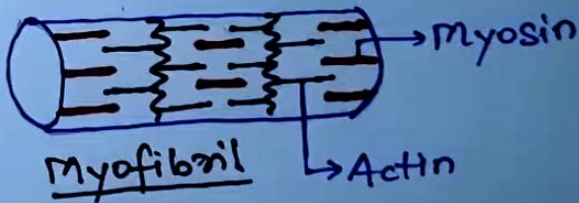
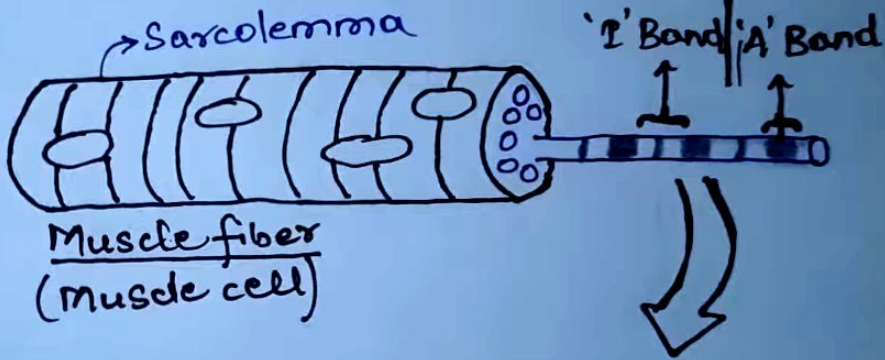
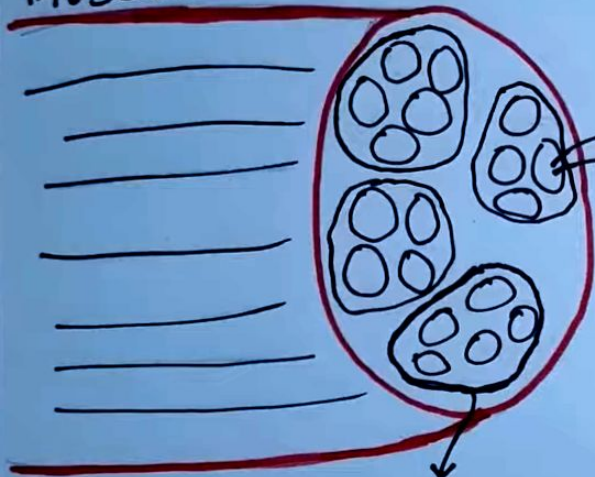


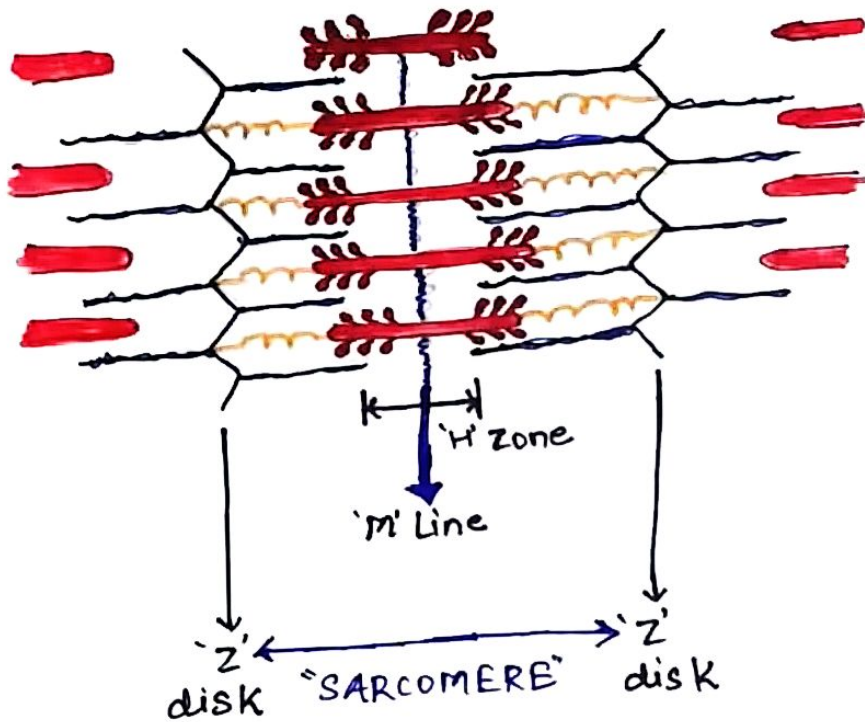
# SKELETAL MUSCLE FIBER



# MUSCLE



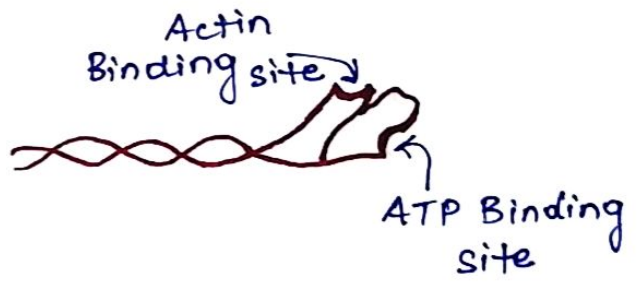
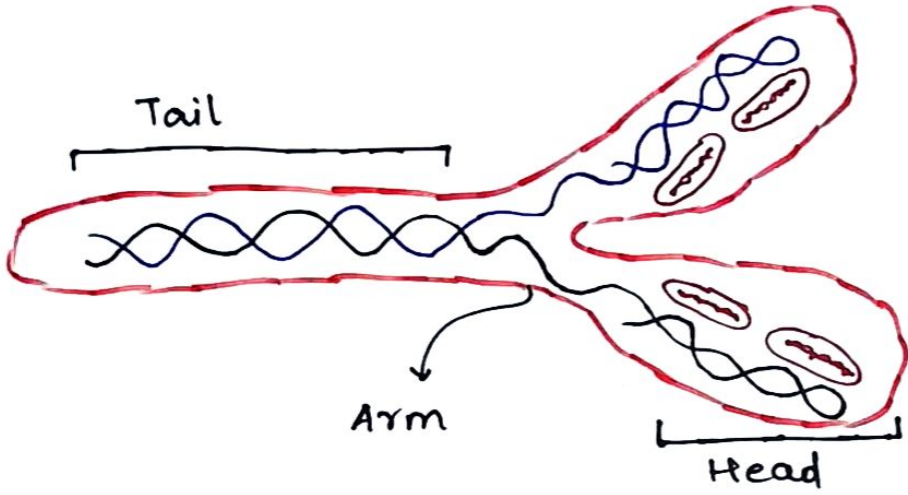
'I' Band   'A' Band   'I' band



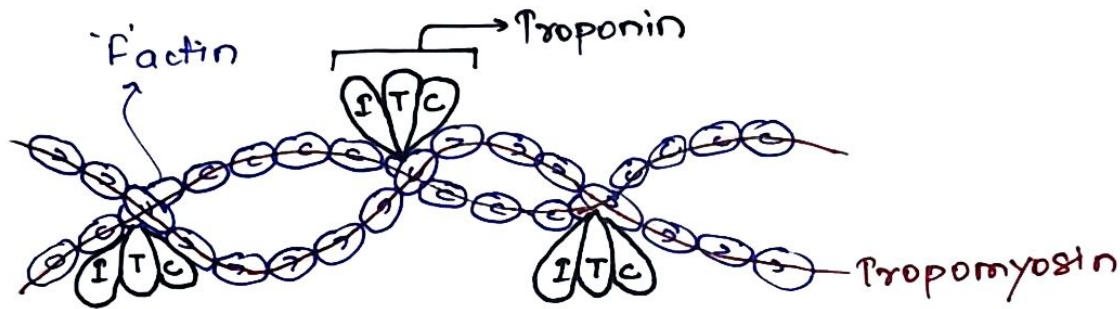
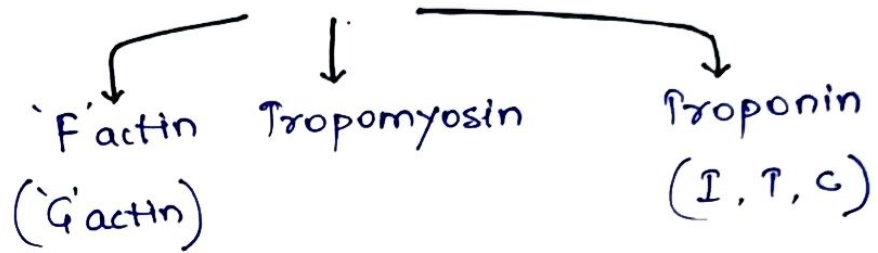
'A' Band  
↳ Anisotropic Band  
↳ Dark Band

'I' Band  
↳ Isotropic Band  
↳ Light Band

MYOSIN FILAMENT = 6 polypeptide (4 Light chains  
2 Heavy chains)



# ACTIN FILAMENT



- 'F' actin  $\Rightarrow$  Have active site (Binds to myosin)
- Tropomyosin  $\Rightarrow$  Covers the active site on 'F' actin
- 'I' Troponin  $\Rightarrow$  Inhibits binding of Actin & Myosin filaments
- 'C' Troponin  $\Rightarrow$  Helps in  $Ca^{++}$  binding
- 'T' Troponin  $\Rightarrow$  Uncovers tropomyosin