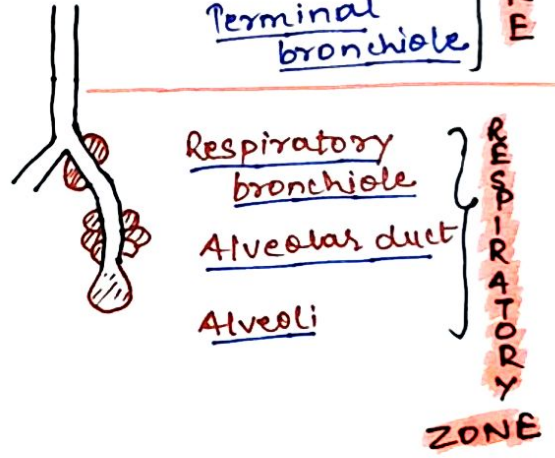
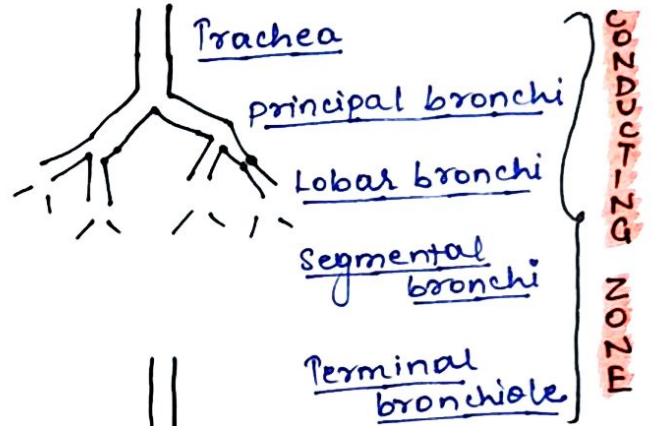
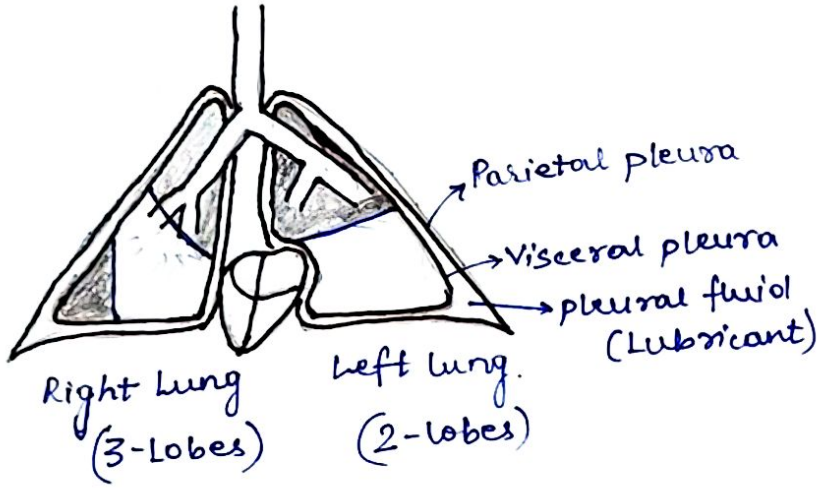
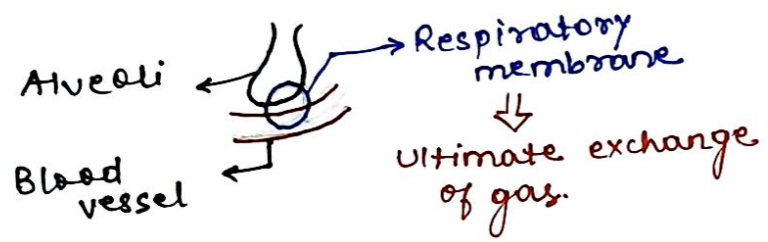


# Bronchial tree

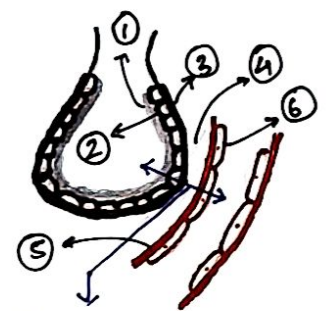


Respiratory unit ⇒  
Respiratory bronchiole  
+  
Alveolar duct  
+  
Alveoli

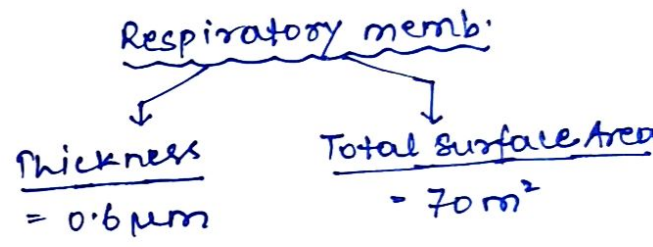
# Respiratory membrane :-



## Includes :-



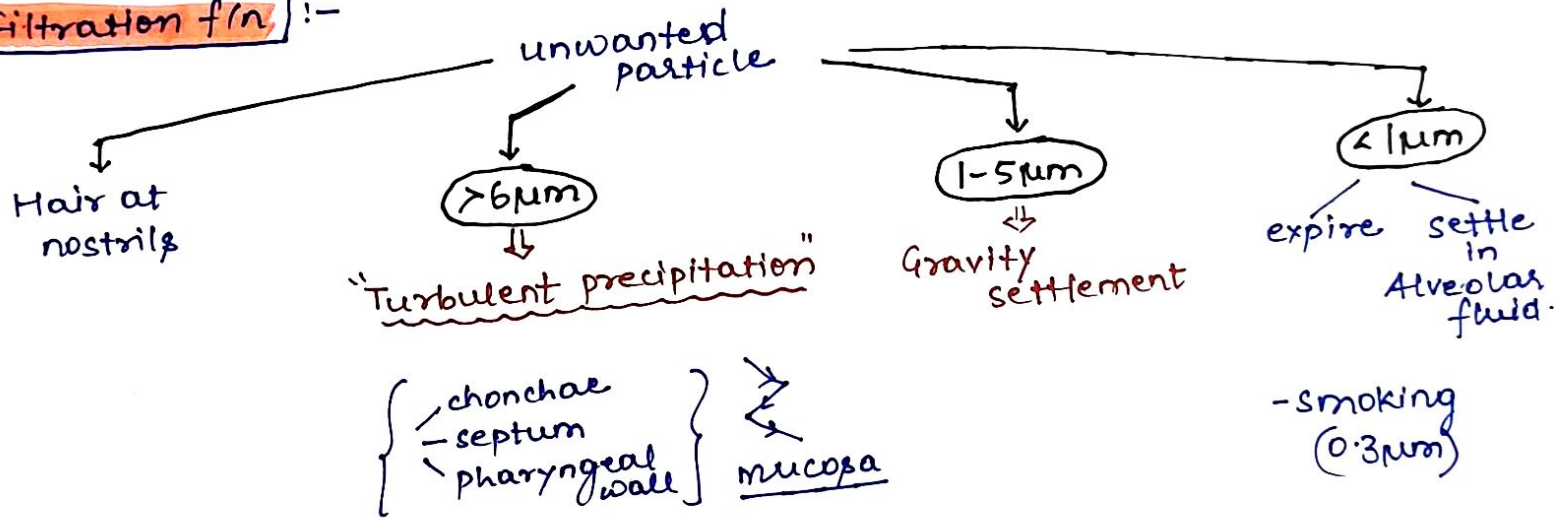
- ① - Surfactant
- ② - Alveolar Epith.
- ③ - Epithelial BM
- ④ - Interstitial space
- ⑤ - capillary BM
- ⑥ - capillary endothelium



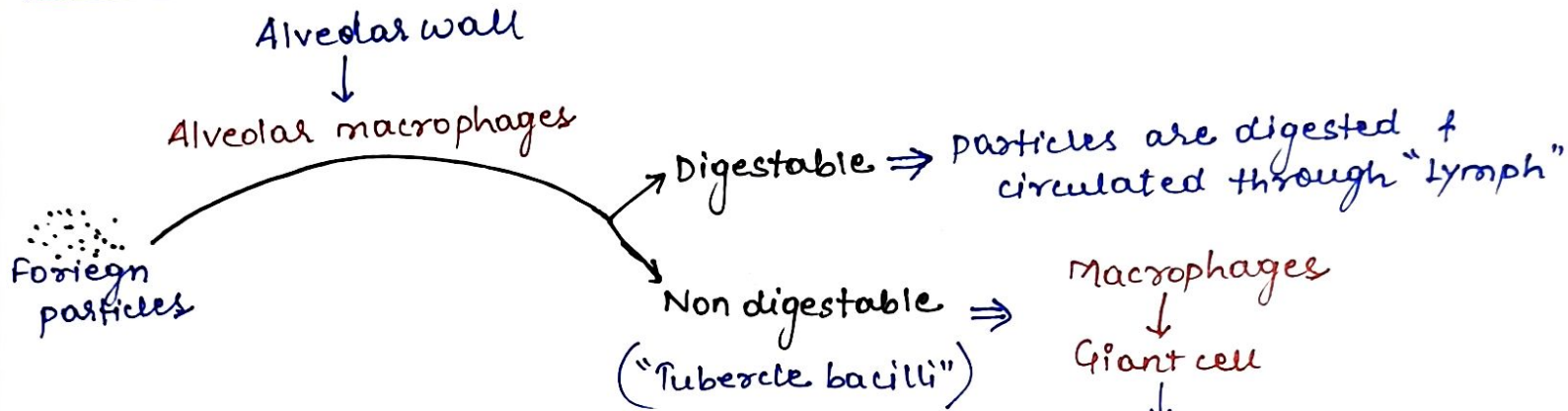
# Non-Respiratory functions of Lungs :-

- ① Filtration function
- ② Immune f/n
- ③ Metabolic f/n
- ④ Phonation
- ⑤ Acid-Base Balance

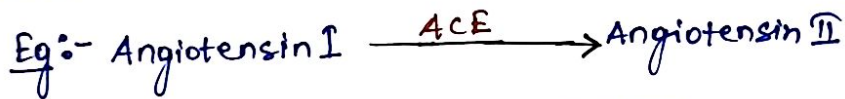
## ① Filtration f/n :-



## ② Immune f/n :-



## ③ Metabolic f/n :-



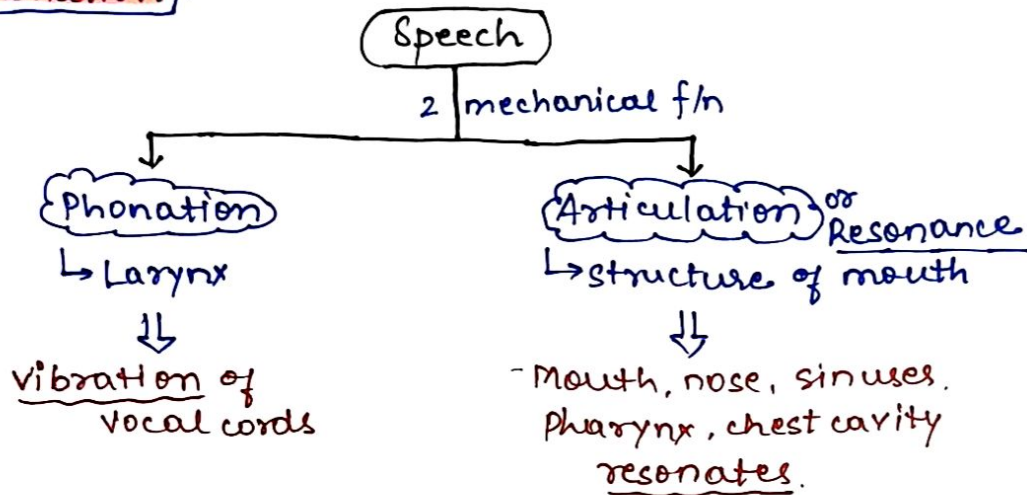
metabolism

- ↳ Serotonin
- ↳ protein
- ↳ Lipids
- ↳ cytokines
- ↳ vasoactive amines

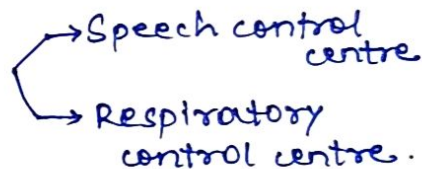
syn. & secretion

- ↳ cytokine
- ↳ Prostaglandin
- ↳ NO.

#### ④ Phonation :-



#### # BRAIN



#### ⑤ Acid-Base Balance :-

✓ Elimination of  $\text{CO}_2$  from body

✓  $\text{CO}_2 \uparrow / \downarrow$   
 $\text{O}_2 \uparrow / \downarrow$  } chemoreceptors  $\Rightarrow$  Respiratory rate change

↳ Neural regulation of respiration  
↳ chemical regulation of respiration.