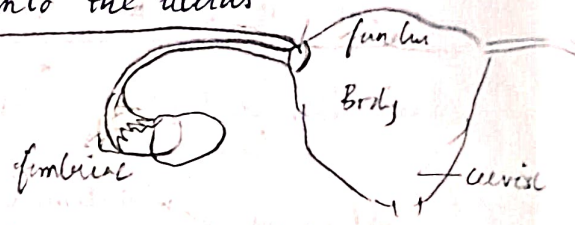


- fundus - part of uterus just above fallopian tube
- cervix $\left\{ \begin{array}{l} \text{supra vaginal part} \\ \text{intra vaginal part} \end{array} \right.$

uterus :-
 1. fundus
 2. body
 3. cervix

Fallopian Tube (10cm length)

1. Intramural part - pierces into the uterus
2. Isthmus
3. Ampulla
4. Infundibulum



\Rightarrow Carries ovum to the uterus } functions
 \Rightarrow Fertilization

Ovary

\Rightarrow Releases ovum.

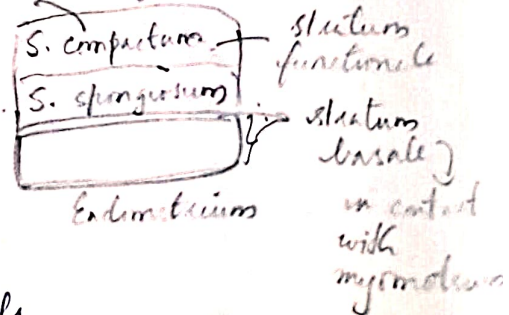
* Cervix opens into the vagina through an external os.

\Rightarrow ontogeny - complete life cycle of an individual

\Rightarrow Ovum is released into the peritoneum (abdominal cavity) from where the fimbriae gets it.

Layers of Uterus

1. Endometrium \rightarrow blood supply
2. Myometrium \leftarrow from
3. Perimetrium



- Endometrium \rightarrow
1. Glands
 2. Blood vessels
 3. Stem cells

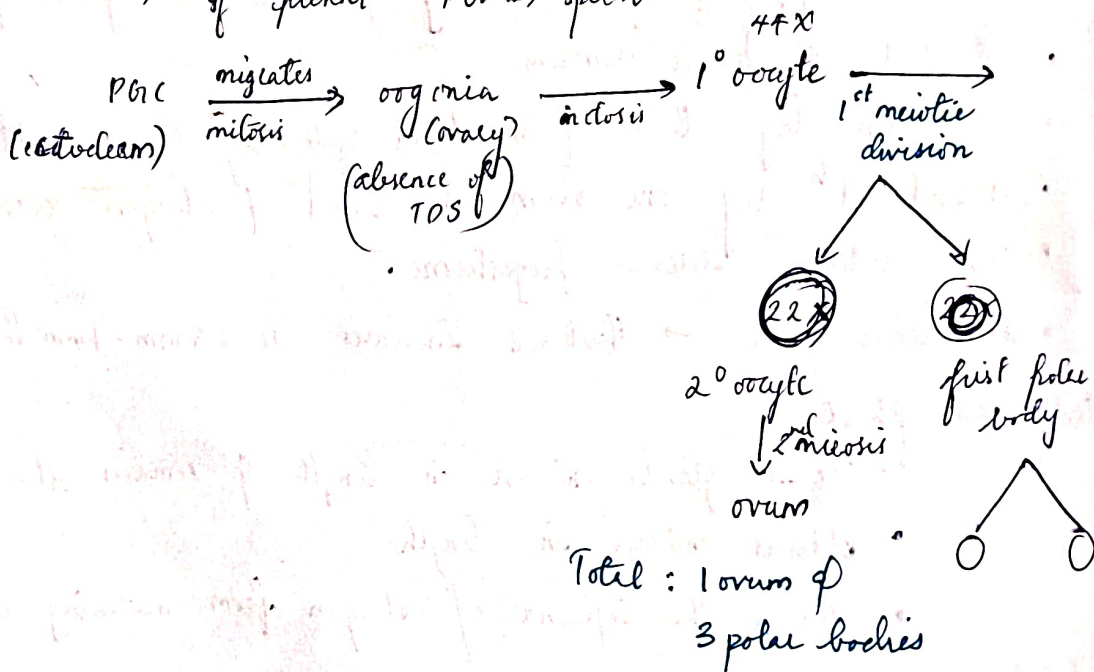
Menstrual phase

- spiral arteries become more coiled

- dysmenorrhea - pain during menstruation
- postmenstrual period
↳ regenerative phase

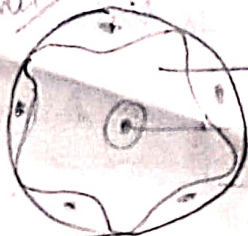
Primordial germ cell / Primitive sex cells

- ⇒ first formed not formed in germ cells gonads
- ⇒ originates from germ layers / ^{disc} endoderm ectoderm
- starts 2 weeks ⇒ ~~second~~ ^{5th} week → moves to gonad
- ⇒ In the ovary, ~~due to~~ ^{if} testis determining factor (TDF) is absent PGC → oogonium (ovary)
- ⇒ if present PGC → sperm

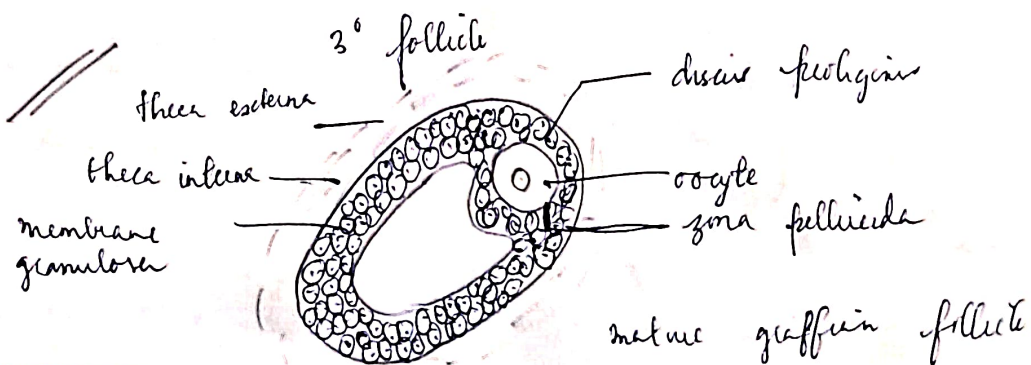
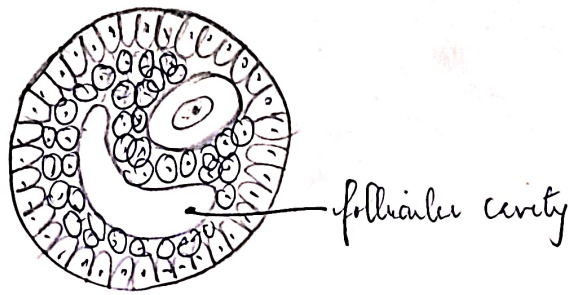
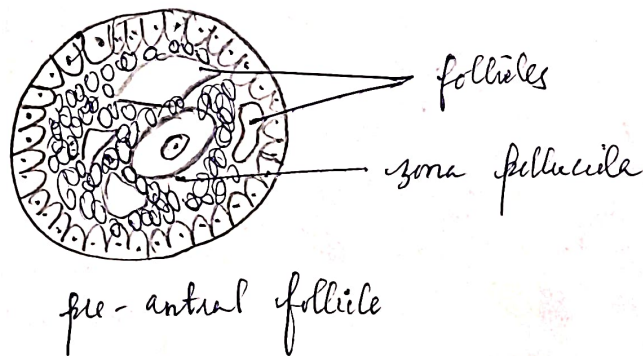
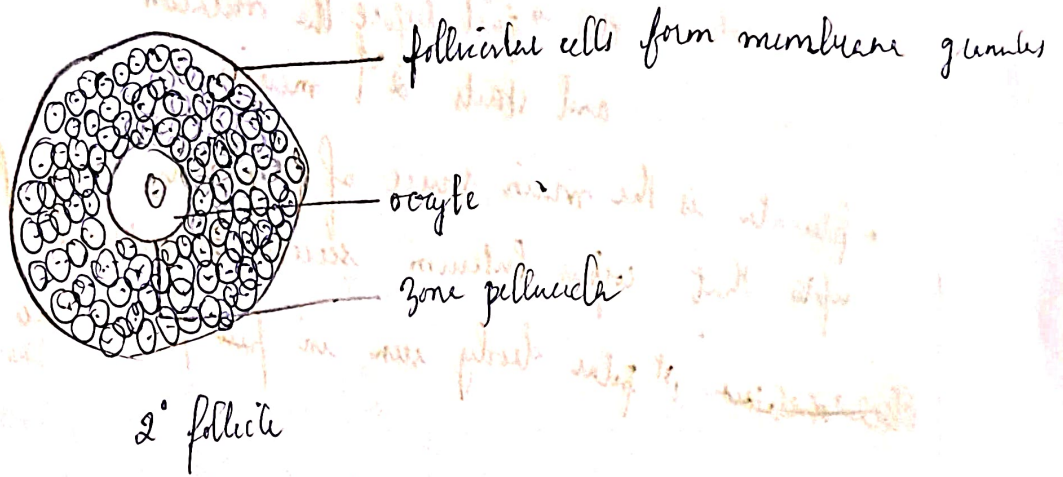
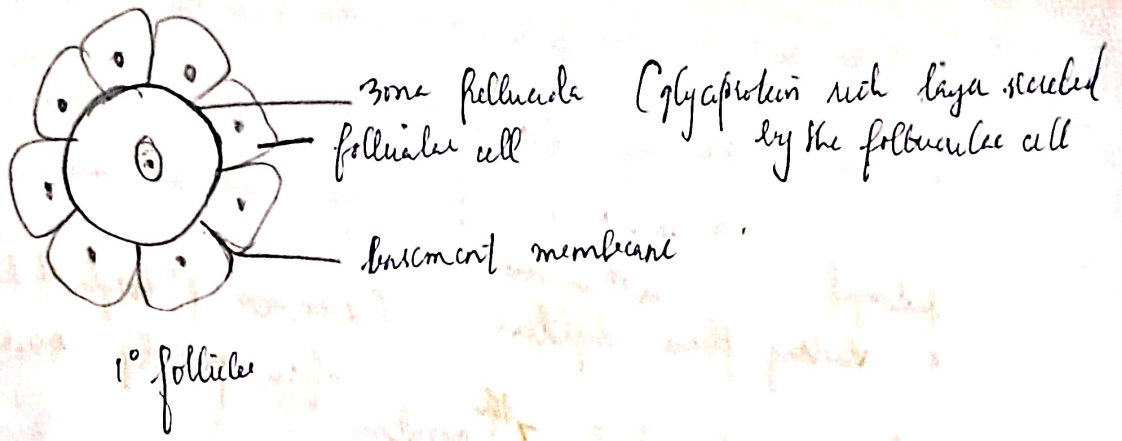


primordial follicle
oocyte (flattened cells)

Antral follicle
(cuboidal cells)



oocyte
nucleus
follicular cell



cells go close to zona pellucida - corona radiata

Ovulation :- All layers (zona pellucida, corona radiata) ~~are~~ are released
cell membrane of oocyte (vitelline membrane) are released

prolonged

* resting phase - diplotene in 1st meiosis

(2,00,000 f^o oocyte at birth

after puberty 40,000)

1st meiosis starts at the 7th month

corpus luteum - yellow body

extends till → just before the ovulation
and starts 2nd meiosis.

• placenta is the main source of progesterone only from the 9th month
upto that corpus luteum secretes progesterone.

~~1st polar body~~ 1st polar body seen in perivitelline space.