

Caseous Necrosis.

It is a distinctive type of necrosis which shows combined features of both coagulative & liquefactive

necrosis. Characteristic of TB & is due to HSR

Cause: There is cheese like appearance of necrotic tissue and is a characteristic feature of tuberculosis.

Site: any organ, m/c - Lung, Lymph node.

GROSS

clumpy.

→ It resembles dry cheese and are soft, granular, yellowish.

Microscopy

Focal lesion of TB is granuloma, can be caseating / non caseating.

• Centre → structureless eosinophilic material having disintegrated nucleus debris, coarsely granular.

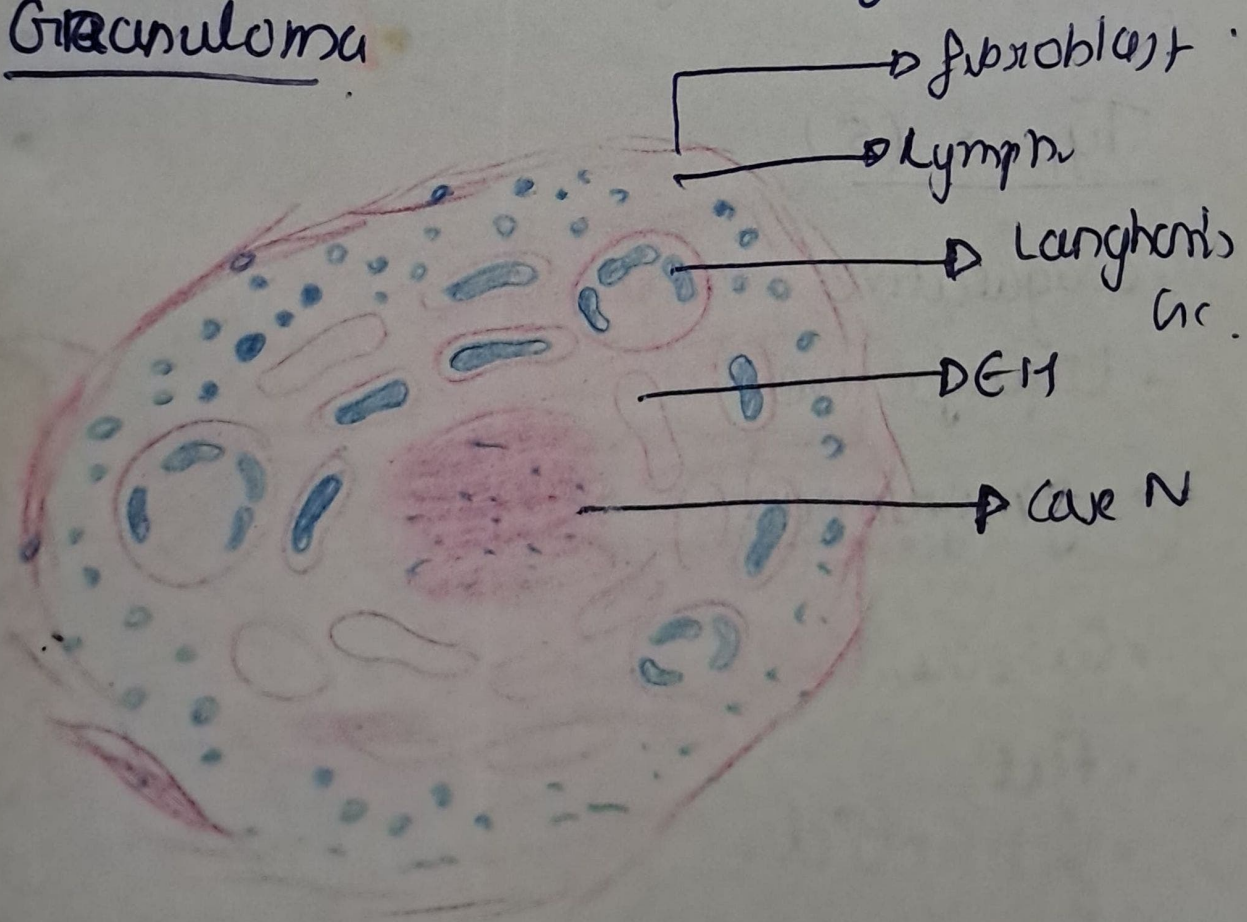
• Surrounded by → epithelioid cells, giant Langhans' cells of foreign body type and peripheral mantle of lymphocyte.

→ This appearance is characteristic of

Granuloma

→ fibroblast

Granuloma



→ subroblast

→ lymph

→ Langhans' cell

→ DEM

→ case N

Caseous Necrosis.

It is a distinctive type of necrosis which shows combined features of both coagulative & liquefactive

necrosis. characteristic of TB & is due to HSD

Cause: There is cheese like appearance of necrotic tissue and is a

characteristic ~~feature~~ of tuberculosis.

Site of any organ, m/c - Lung, Lymph node.

GROSS

clumpy.

→ It resembles dry cheese and are soft, granular, yellowish.