

Rectum

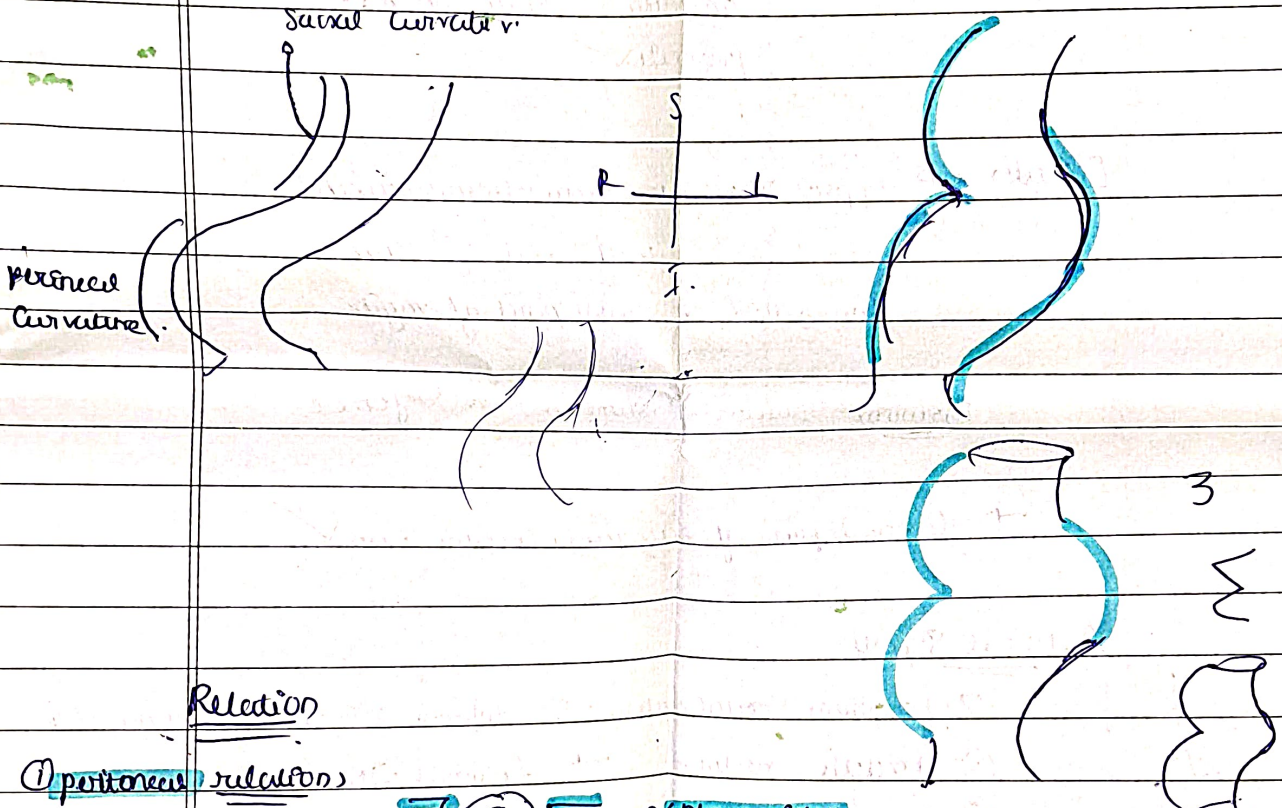
Curvatures. → begin & ends @ median plane.

2 Anteroposterior curvature.

- ① sacral flexure → concavity of sacrum & coccyx.
- ② perineal flexure → bend at the ano-rectal jct.




3 Lateral Curvatures.

- ① Upper-lateral → convex to right.
- ② middle → convex to left
- ③ lower → convex to right



Relation

① peritoneal relations

- upper  → anterior (side)
- middle  → anterior only
- lower  → not covered by peritoneum

4 - Houston valve
 3rd - middle lat
 Curvature
 - Concavity

Visceral relations

male → upper 2/3rd → recto vesical pouch
coils of ileum & sigmoid colon.

lower 1/3rd → base of urinary bladder. ✓

ureter → luminal part

seminal vesicles. ✓

ampulla of duct deferens ✓

prostate ✓

Females → upper 2/3rd → recto uterine pouch ✓

with coils of ileum ✓

lower 1/3rd → lower part of vagina ✓

Posterior - relations - same in male & female.

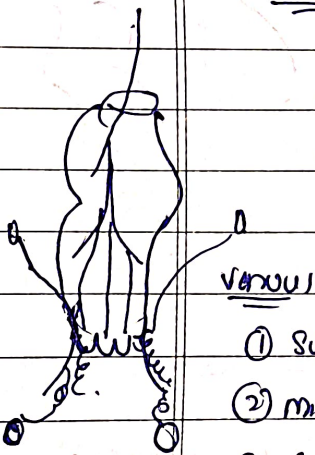
→ lower 3 pieces of sacrum, coccyx & per ✓

Arterial Supply

① superior rectal artery → inferior mesenteric continuation

② middle rectal → internal iliac

③ median sacral artery → direct continuation of aorta.

Veins

① Superior rectal vein → inferior mesenteric vein

② middle rect → internal iliac vein.

③ inferior rectal vein → internal pudendal vein.

Lymphatics - upper → inferior mesenteric node

lower → internal iliac node,

Applied

proctoscope

① per rectal exam.

F → cervix, perineal body.

M → prostate, seminal vesicles

② prolapse of rectum.

incomplete → mucosal prolapse

complete → whole thickness of rectal wall.

▷. Luminal part