

184

Spleen

most commonly ruptured during RTA

Arterial supply

largest lymphoid organ
→ filtration of blood

• splenic artery

Location - left hypochondrium. ✓

venous drainage

splenic vein

+ smv → portal vein

- It lies obliquely along long

axis of 10th rib.

→ ~~middle~~ → opposite to

9th, 10th, 11th rib.

Shape - wedge shaped.

Size → 1 - inch - Thick
3 - inch - Breadth
5 - inch - length
7oz - 200g.

(9-11)

- 3 borders.

External features - 2 ends

- 2 ends

2 Surfaces

Two ends → Anterior & posterior end.

• broad - like a bow

blunt, round

• downwards

• upwards

• lies laterally.

• lies medially.

forwards.

• backwards.

Two Surfaces → Diaphragmatic - convex, smooth

visceral surface → concave → It has.

3 borders

• superior border → Notched.

• inferior border - rounded.

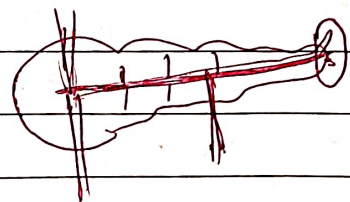
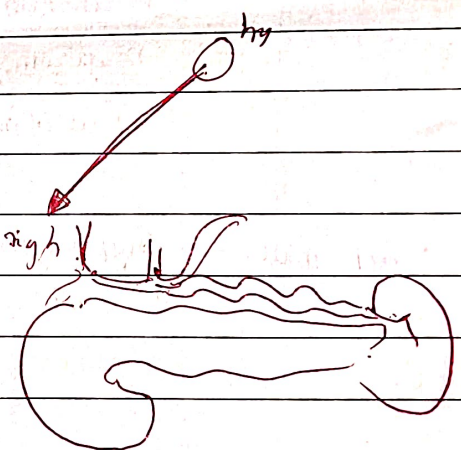
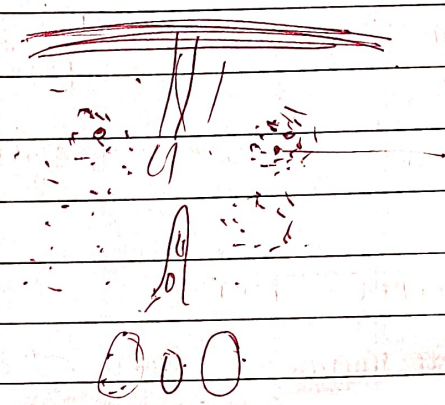
• Intermediate borders

gastro, renal, colic, } impressions.

pubocoele } → indicate lobulated.

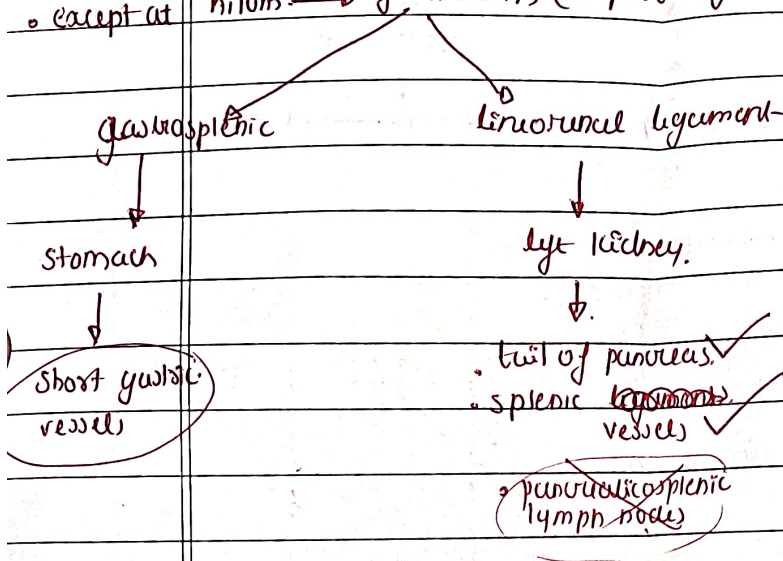
Hilum

→ inferior to gastric impression, above intermediate border.



Peritoneal

- Covered entirely by peritoneum.
- except at hilum → from hilum (2 peritoneal folds)

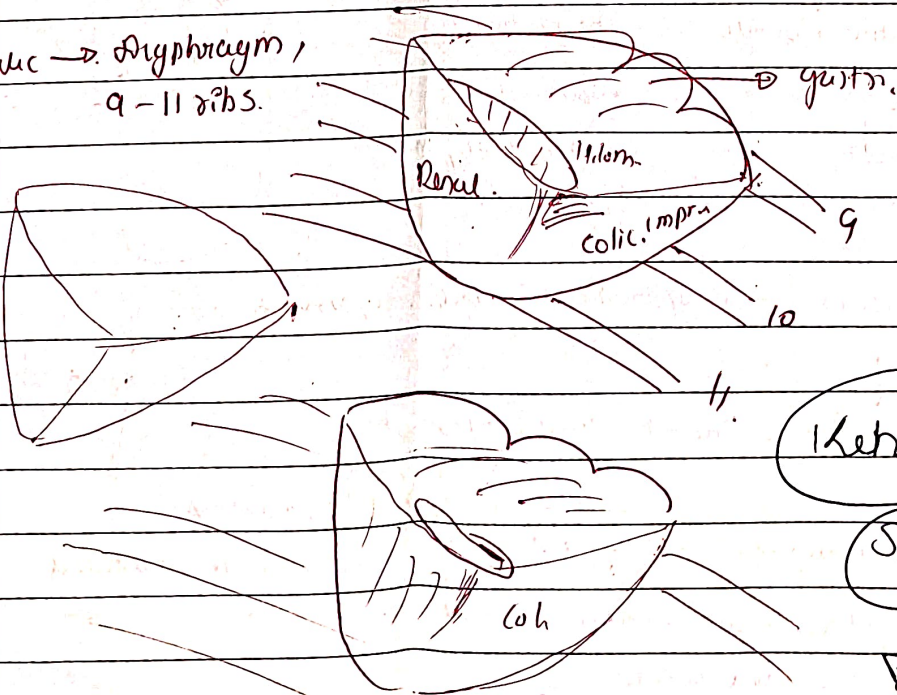


VISCERAL RELATIONS.

btus

- | | |
|---|-----------------------------------|
| visceral surface → Fundus. → gastric impression → | sup & intermediate borders. |
| → left kidney → renal | → intermediate & inferior borders |
| → left colic flexure | → near anterior end. |
| → Tail of pancreas. | → at hilum. |

Diaphragmatic → Diaphragm,
9-11 ribs.



Kehr's

Sign

rupture of spleen ←

referred pain to left shoulder.