

SCALP.

- soft tissue covering cranial vault.

Extent.

- Anteriorly → Superciliary arch margins.
- posteriorly → supraorbital arch.
- external occipital protuberance.
- superior nuchal line
- laterally → superior temporal lines.

LAYERS OF SCALP.

SLP → Surgical layer of scalp / scalp proper.

→ scalp proper.

S - skin

C - Connective tissue (superficial fascia)

A - aponeurosis - deep fascia - epicranial aponeurosis.

L - Loose areolar tissue. with occipitofrontalis muscle.

P - pericranium.

galea aponeurotica.

Skin

- hairy.
- large number of sweat & sebaceous glands.
- so common site of sebaceous cyst.
- adherent to epicranial aponeurosis by dense superficial fascia.

dense connective tissue layer / superficial fascia.

- binds skin to epicranial aponeurosis.
- Blood vessels and nerves of scalp lie in this layer.
- fibrous septa divide this layer into numerous small pockets containing lobules of fat.
- walls of vessels are adherent to fibrous network, hence they are unable to retract when cut & cause profuse bleeding.

aponeurosis.

- also known as epicranial aponeurosis or galea aponeurotica.
- This layer is formed by occipitofrontalis and its aponeurosis.
- The wounds of scalp does not gape until aponeurosis is cut transversely.
- Anteriorly → receives insertion of frontalis.
- posteriorly → receives insertion of occipitalis.
- superior nuchal line & EOP.
- laterally → superior temporal and sends fibers in expansion to zygomatic arch.

Loose areolar tissue.

- serve as natural plane of cleavage during craniotomy.
- contains emissary veins connecting second layer of scalp to intracranial dural venous sinus.
- extends into eyelids anteriorly.
- posteriorly → as frontalis has no bony attachments.

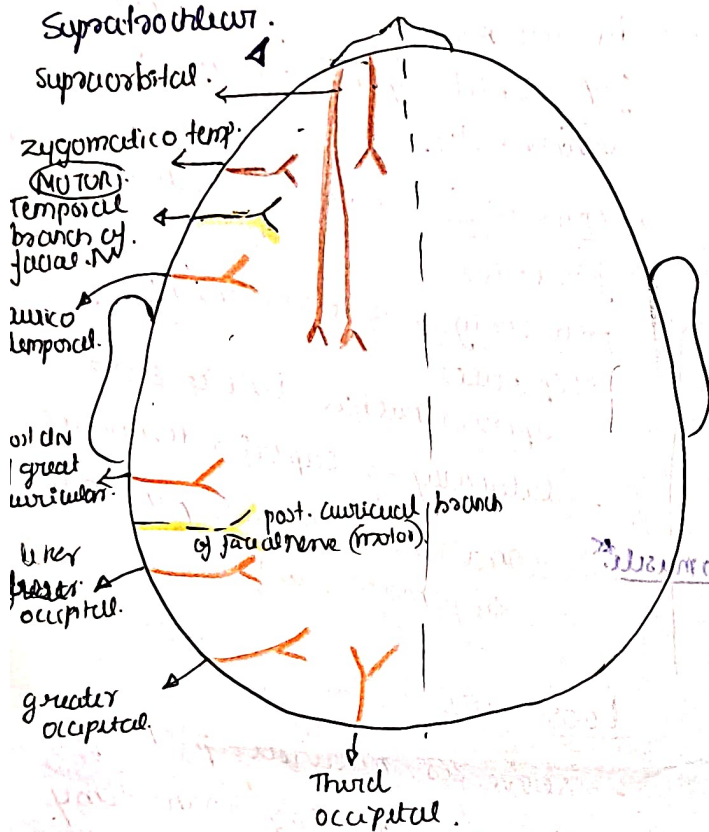
pericranium.

- pericranium of vault of skull.
- It is loosely attached to bones and can be easily stripped.
- but at sutures, it is firmly attached to sutural ligaments which in turn attaches to endocranium.

NERVE SUPPLY OF SCALP

Sensory supply of scalp.

- Each side of midline is supplied by 8 sensory nerves.

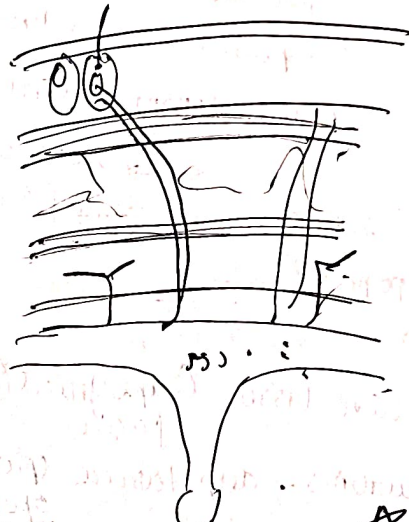


Supratrochlear } frontal branch.
 Supraorbital } (ophthalmic division of trigeminal nerve).

zygomatico-temporal } zygomatic branch (maxillary div of trigeminal nerve).

auriculotemporal -> mandibular div of trigeminal nerve.

- post div of great auricular (C3, C4) ventral rami of 24 cranial nerves.
- lesser occipital (C2) ventral rami,
- greater occipital (C2) dorsal rami,
- Third occipital (C3) dorsal rami.



Anterior Aspect

- Dماغية layer } loose areolar
- Black eye
- Superficial layer of scalp.
- Cephalhematoma -> subperiosteal blood collection (confine within sutures)
- Cephalhematoma -> subcutaneous emphysema during both trauma (cross suture line).