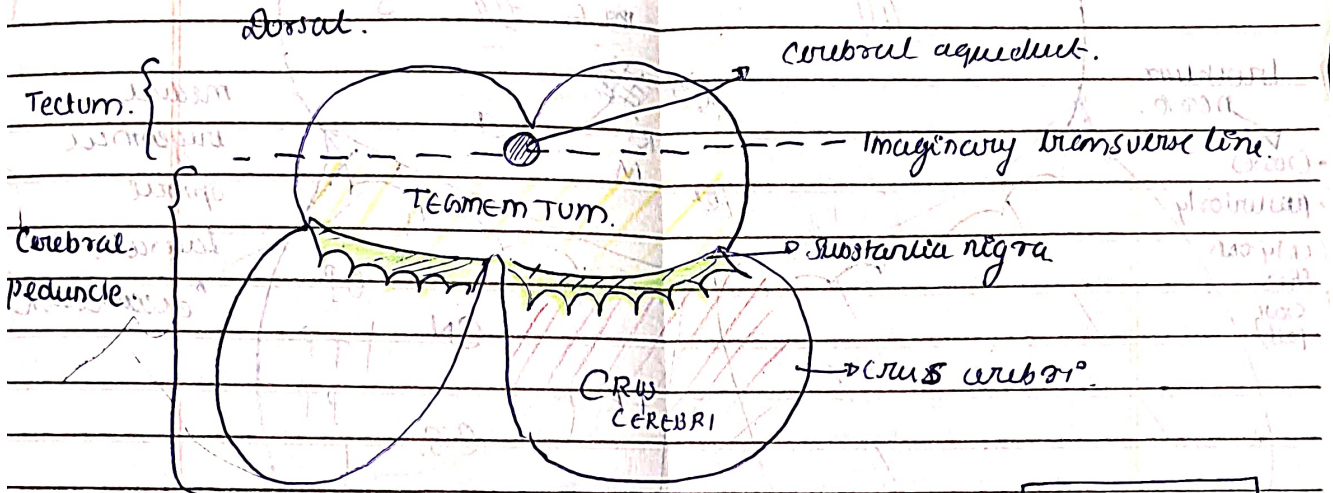


MIDBRAIN.

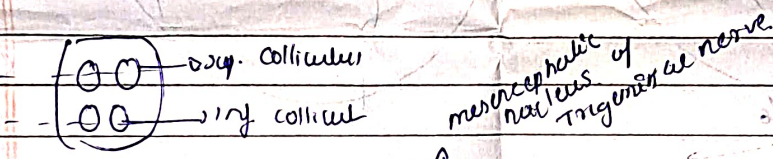
• External features of midbrain.

ventrally → 2 projections → crura of midbrain.
dorsal → 2 oval mass → colliculi

Internal features of midbrain.

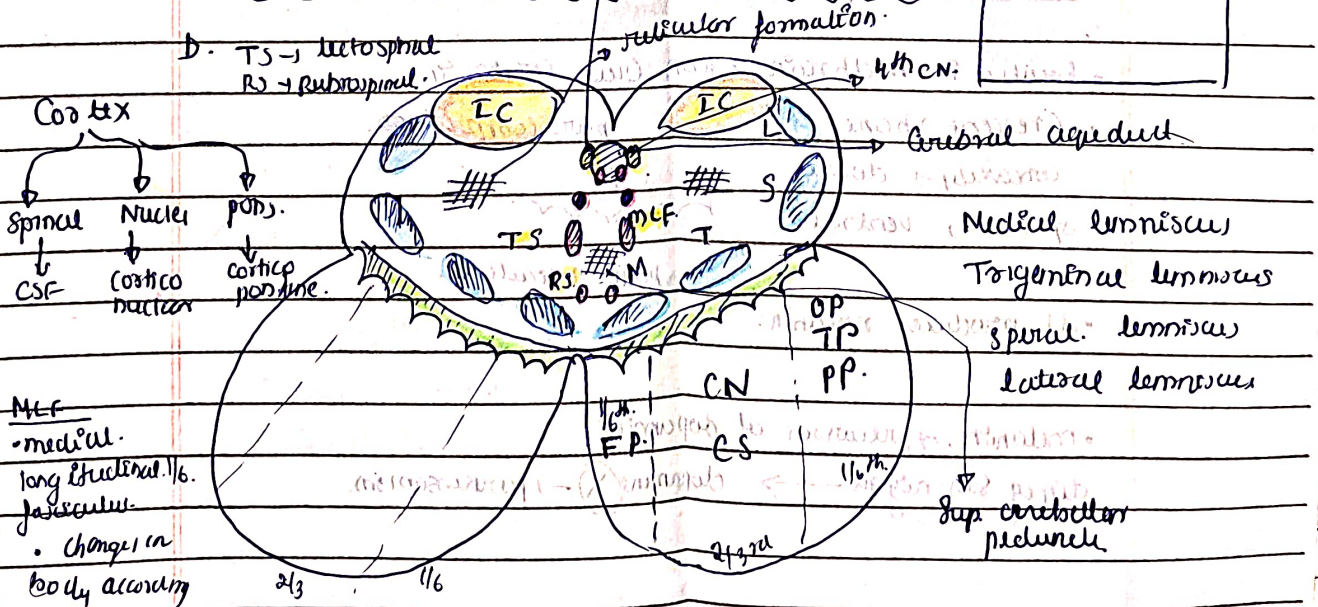


Ventral.

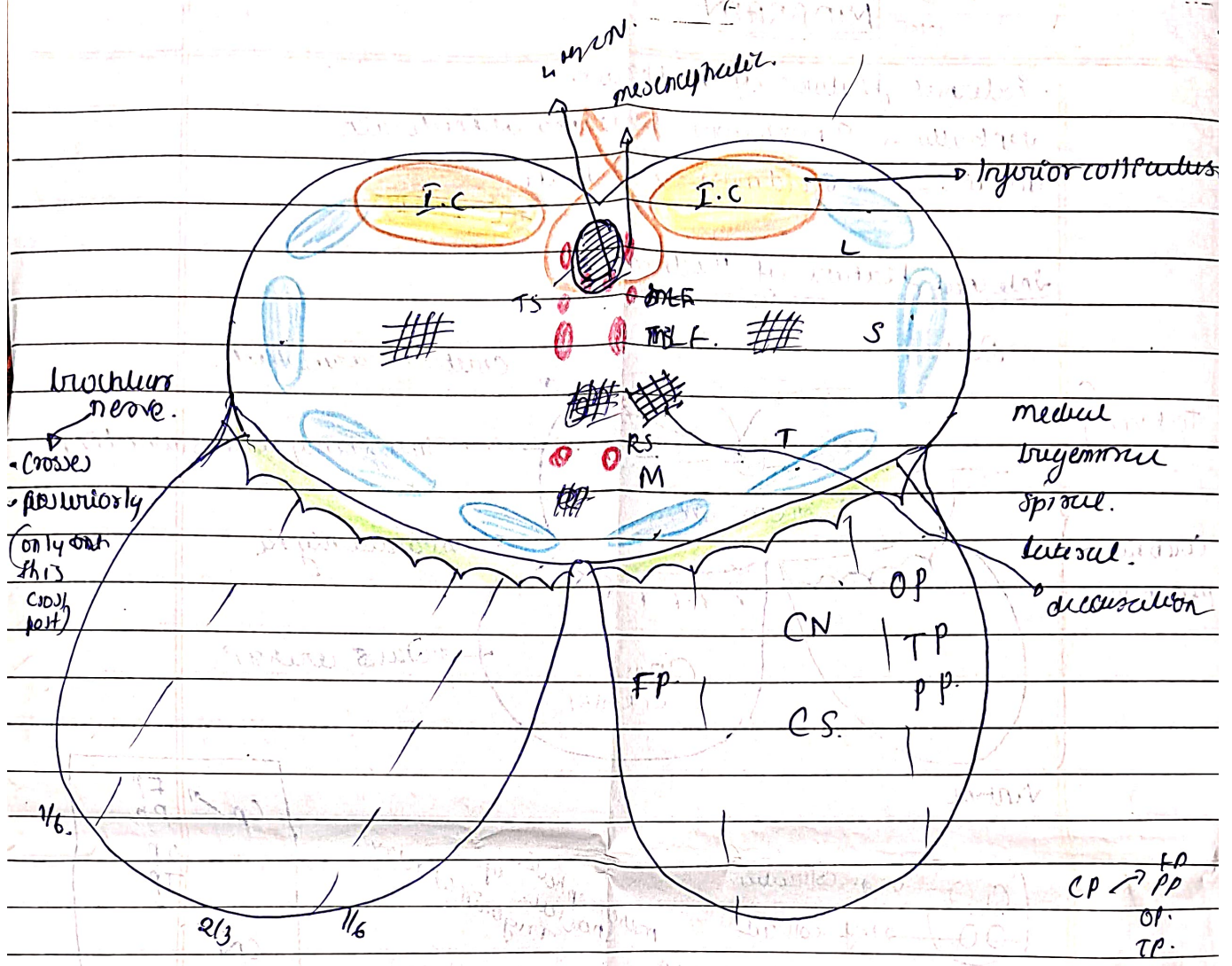


Cp	FP
	PP.
	OP
	TP.
CN	
ES	

Transverse section at level of inferior colliculus.



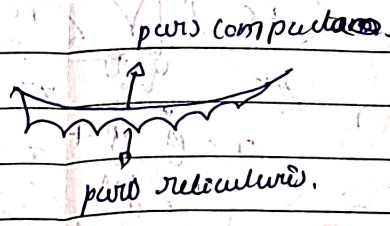
- M → coarse sensation of vibration, proprioception, joint senses
- T → purely imp. of face.
- S → purely imp. of cell
- L → crude touch & auditory sensation.



Substantia Nigra

• located in midbrain between Crus Cerebri &

• Crescent shape.
 convexity → dorsal.
 spine → ventral.



• It produces melanin.

• melanin → precursor of dopamine.

degeneration of sub. nigra → dopamine (X) → parkinsonism.

