

28/10/23.

THORACIC WALL

* clinically significant

Sternum → manubrium sternum.
• 3 parts. → Body of sternum.
→ xiphoid process.

gap btw ribs & sternum → costal cartilage.

1-7 → has their own costal cartilage.

8 → Intercostal space.

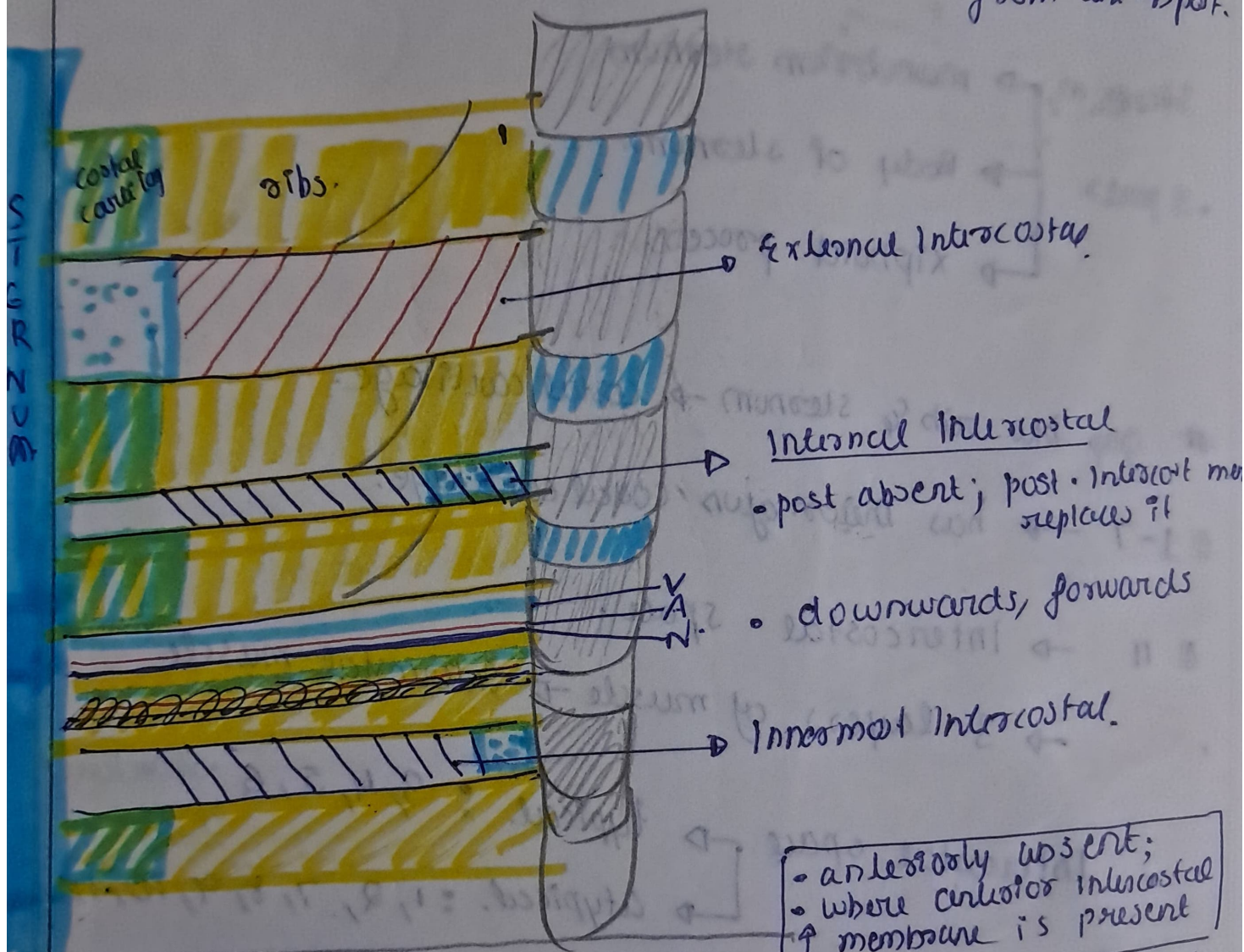
→ 3 layers of muscle → Intercostal muscle.

Intercostal space

typical : 3, 4, 5, 6 = standard spaces.

atypical : 1, 2, 7, 8, 9, 10, 11.

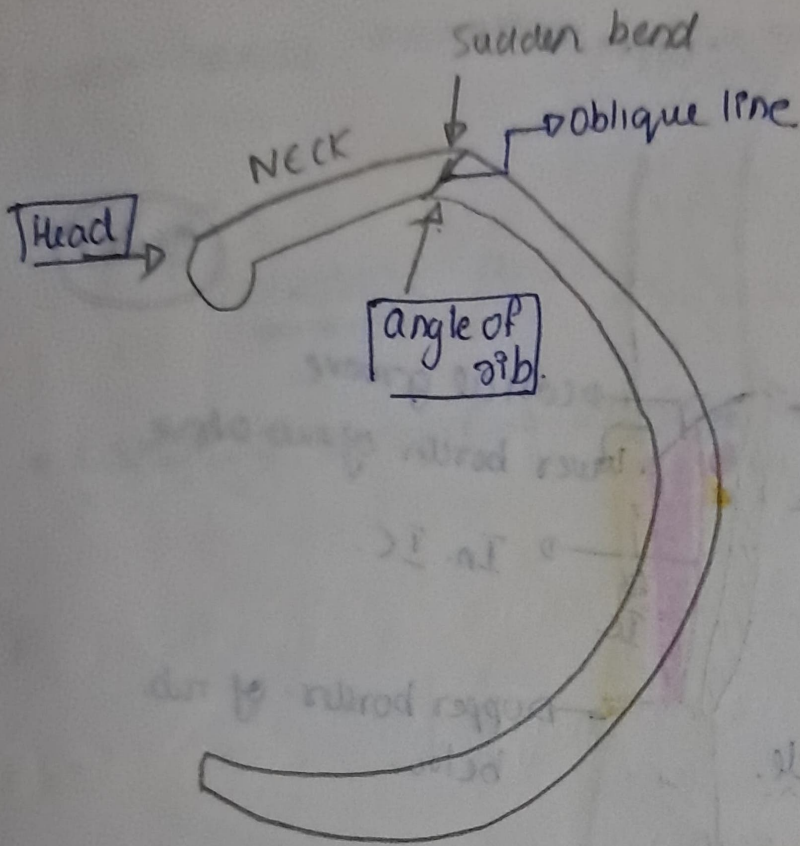
Successive
layers from External
→ Inner
from ant → post.



* costal groove.

* 3 layers of IM

Anterior:
Ext IM = downward & forwards &
medially.

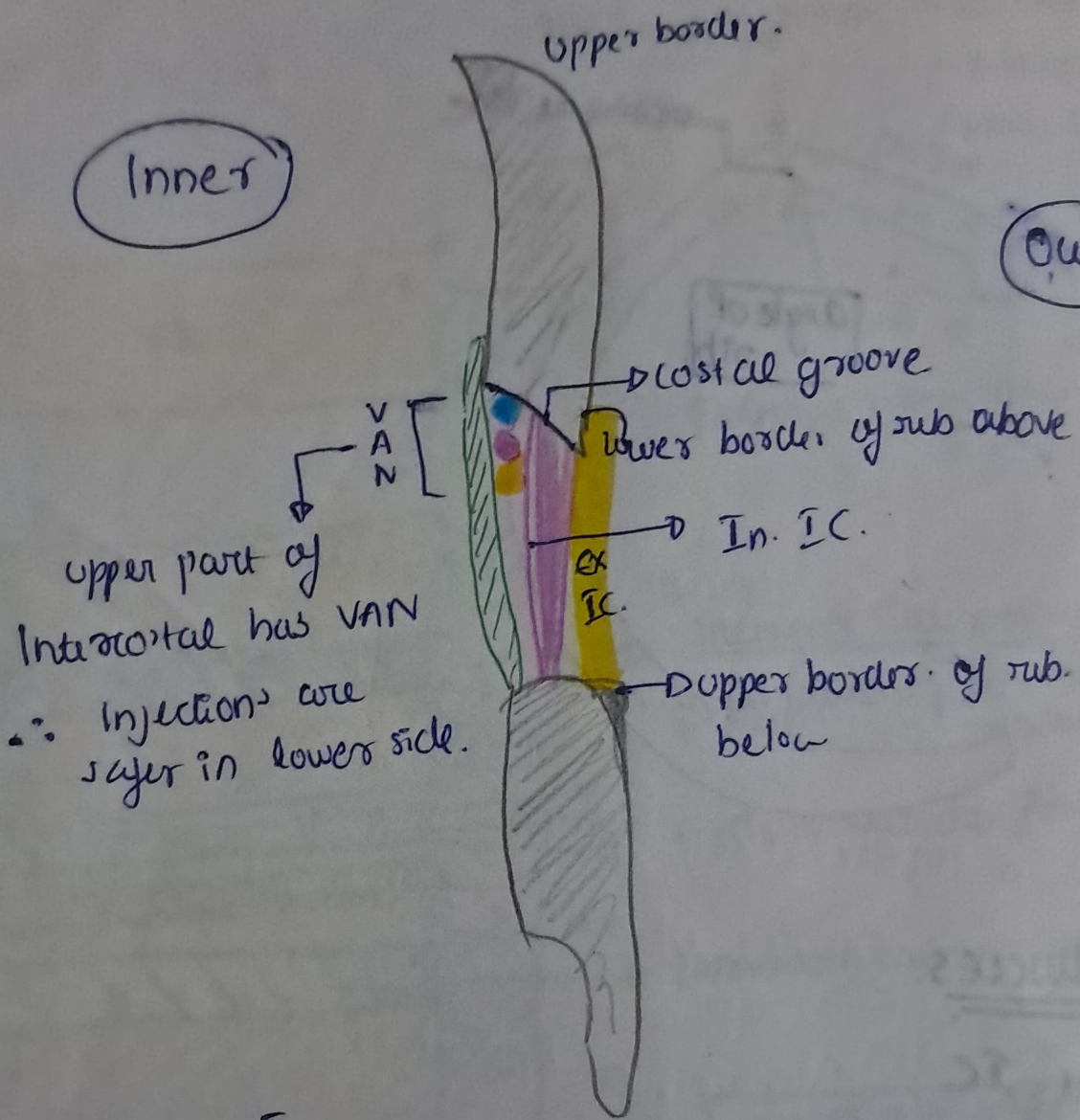


MUSCLES.

- Ext. IC.
- Int. IC.

Transverse Thoracic.

- sternocostalis (front).
- Subcostalis. (back)
- Intercostalis Intimus. (side)



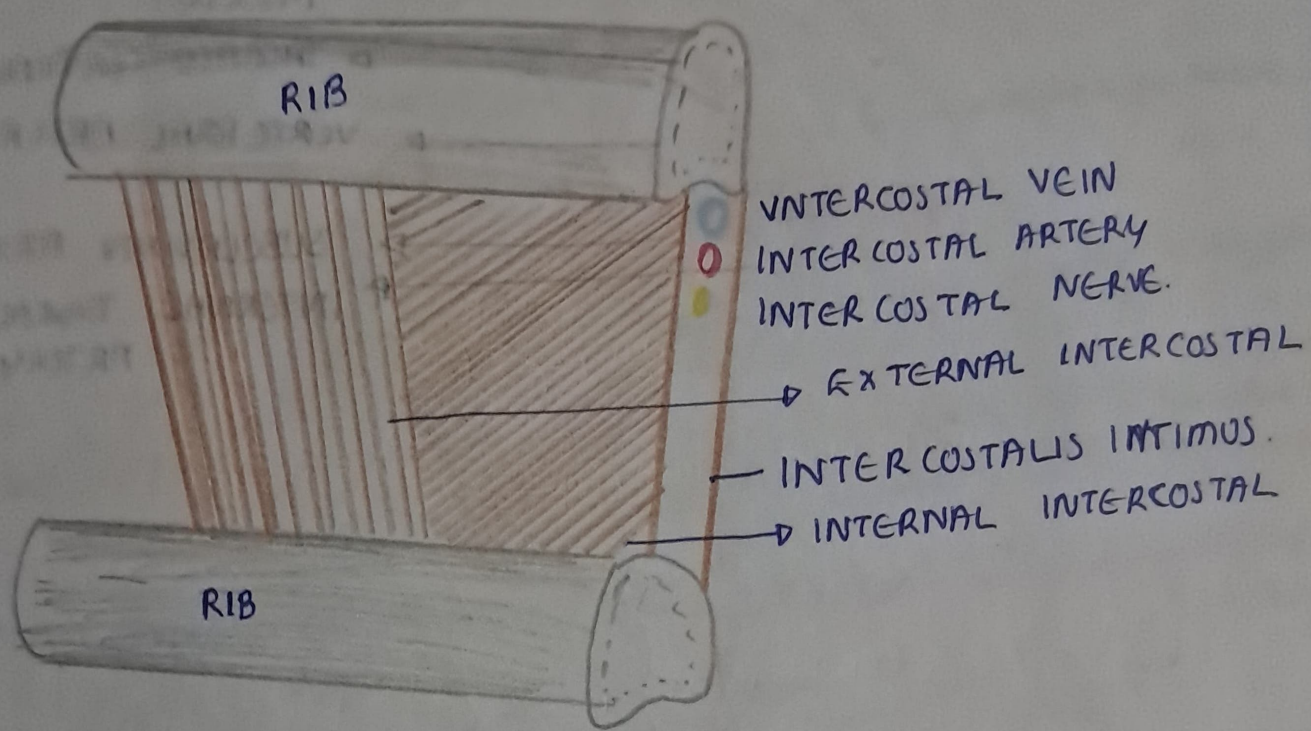
upper part of Intercostal has VAN
 ∴ Injections are safer in lower side.

Ex. IC.

FUNCTION

- 1st. outer border of lower border part.
- 2nd. outer part of upper border.

• respiration.



← SUPERIOR ENLARGEMENT

← INFERIOR ENLARGEMENT