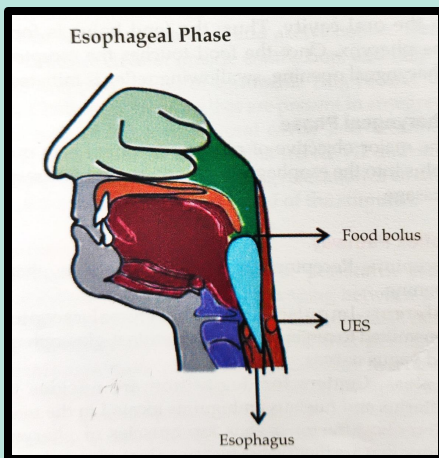
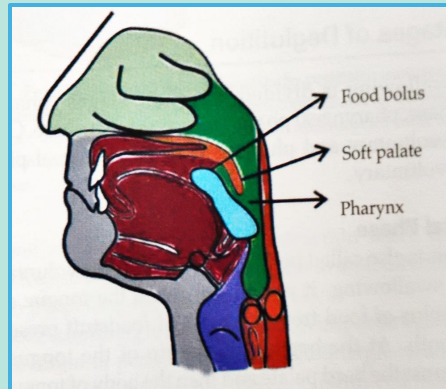
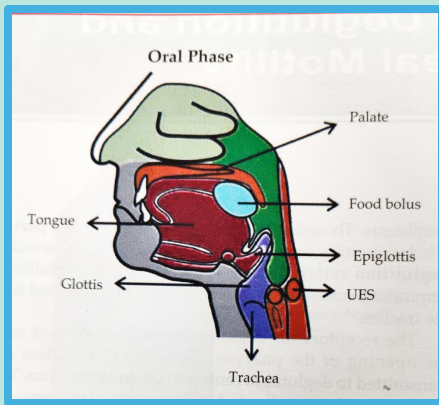




DEGLUTITION



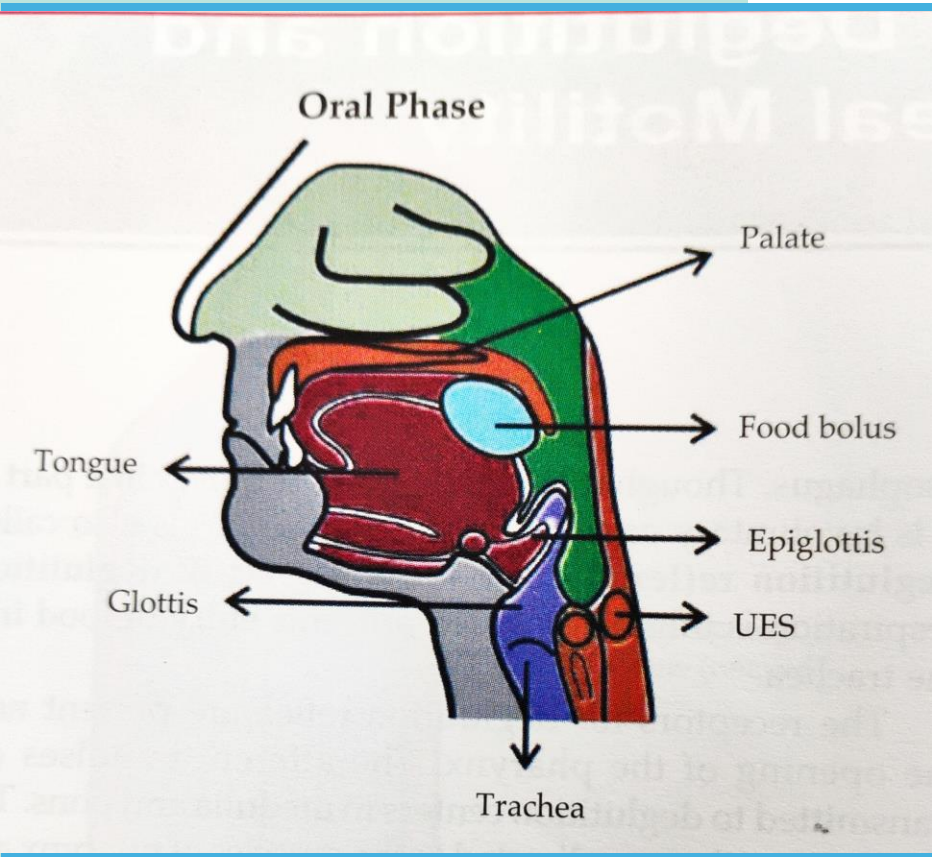
DEGLUTITION

STAGES

- ORAL(BUCCAL, VOLUNTARY)
- PHARYNGEAL
- ESOPHAGEAL

DEGLUTITION

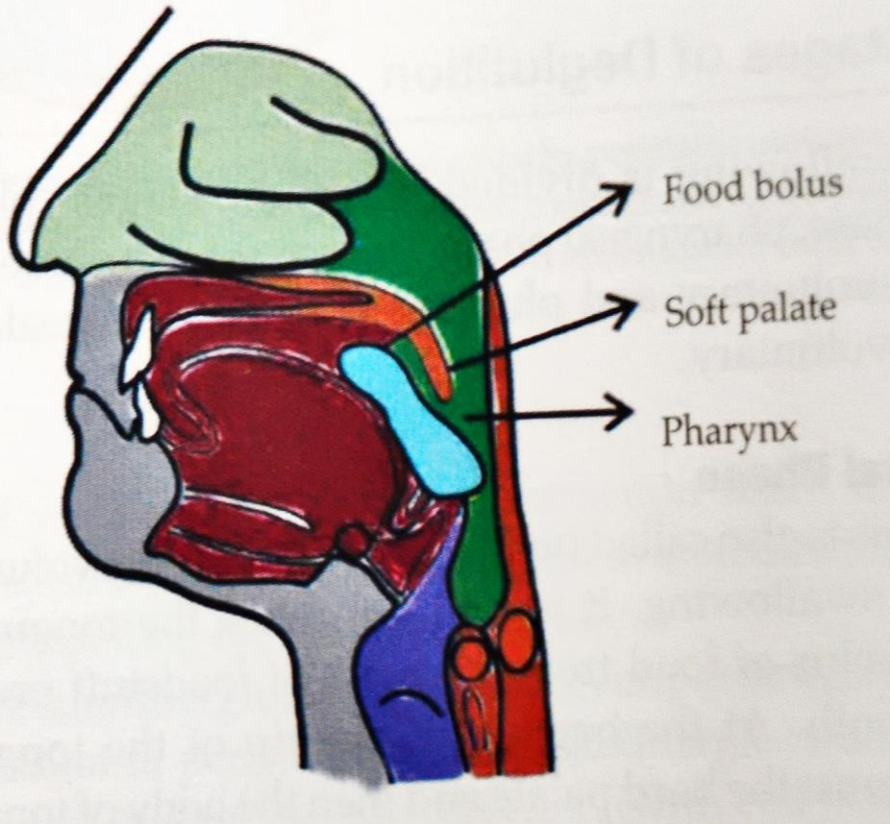
ORAL STAGES



- Chewed Food Rolled Into Bolus by Movements of Cheek & Tongue.
- Contraction Of Front Part Of Tongue Press Bolus Against Hard Palate.
- Movements of middle part Push to Back.
- By Strong Contraction Of Myoglossus Muscle Enter Into Oropharynx.
- Afferent & Efferent Fibres-5,9,10 Cranial Nerves.

DEGLUTITION

PHARYNGEAL STAGE



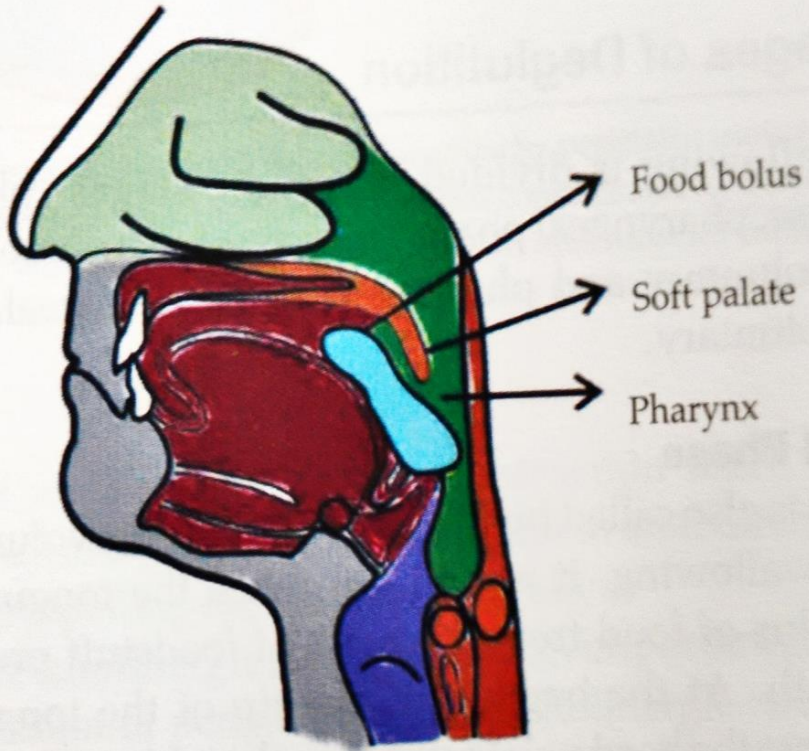
- Less Than 2 Seconds.
- Involuntary.
- Initiated When Food Come In Contact With Posterior Aspect Of Tongue, Palate, Tonsils, Posterior Pharyngeal Wall- Automatic Pharyngeal Muscle Contraction-esophagus.
- 4 Outlets

DEGLUTITION

PHARYNGEAL STAGE

4 OUTLETS

1. Back to Mouth : Prevention by approximation of tongue against roof of mouth.
2. Into Nasopharynx
 - Prevented By Pressing Soft Palate against post. Pharyngeal Wall.



DEGLUTITION

PHARYNGEAL STAGE

4 OUTLETS

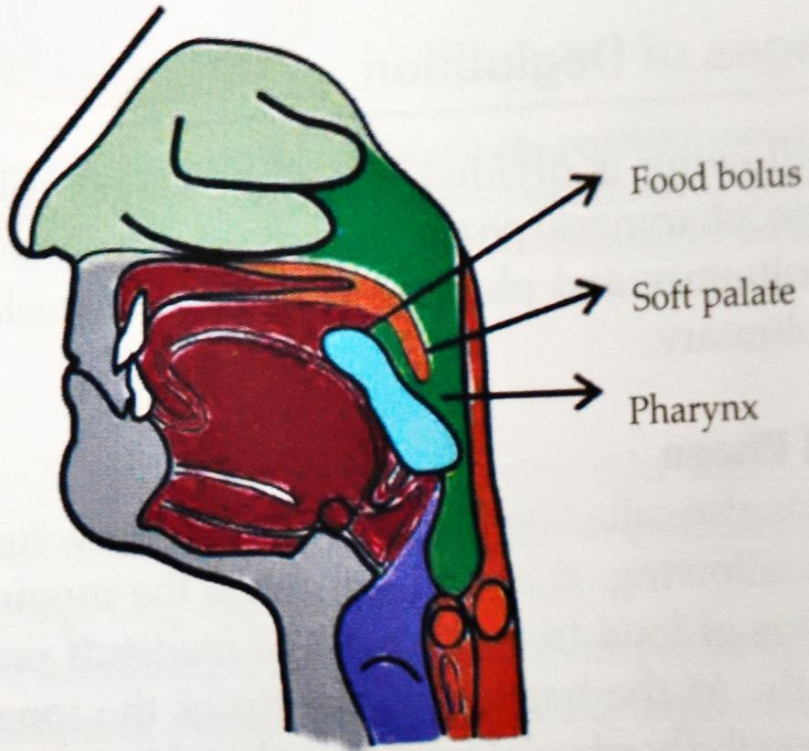
3. Into Larynx:

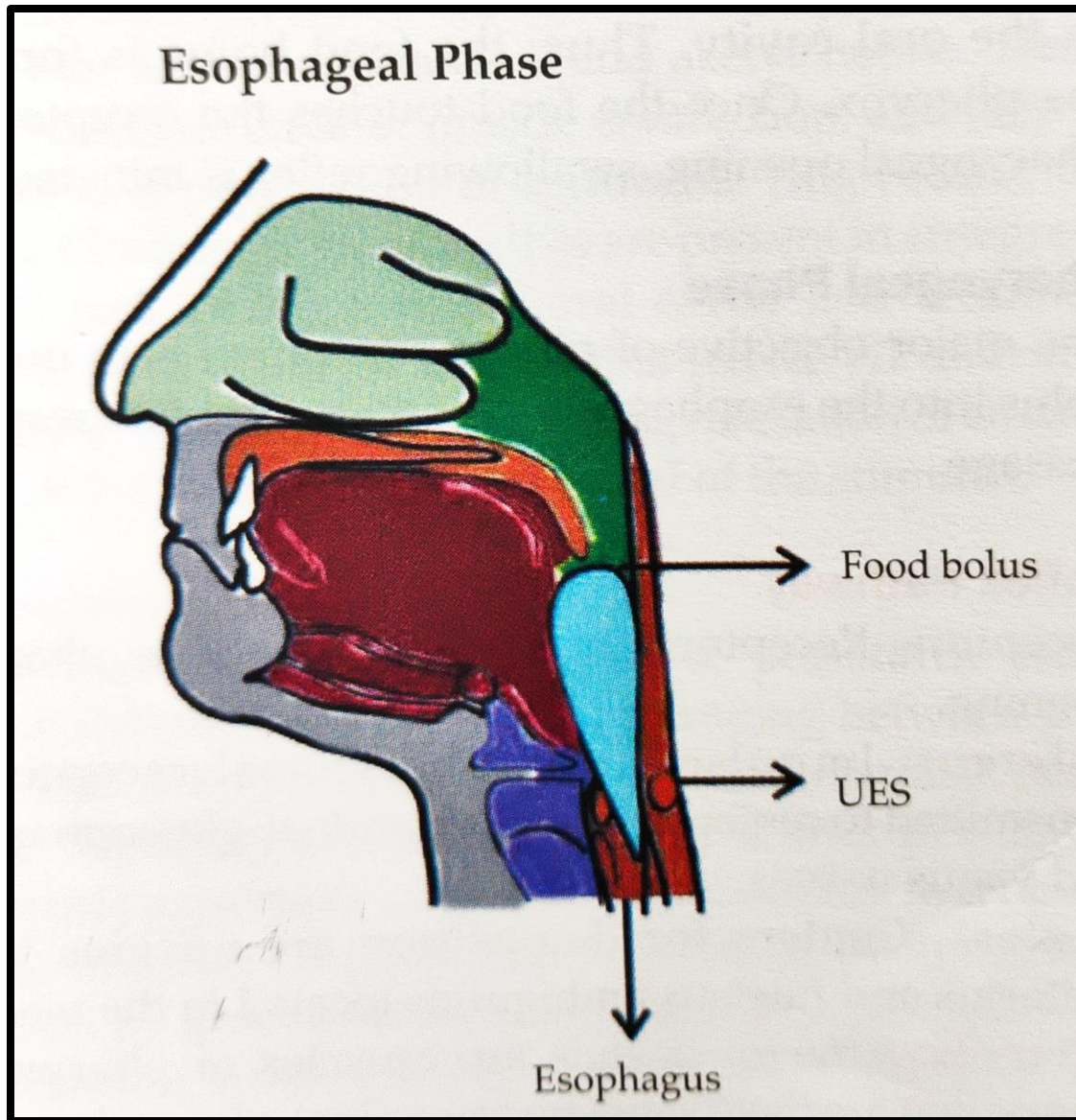
Prevention

- Deglutition Apnea Swallowing Centre Inhibit Medullary Resp. Centre
- Tight approximation of Vocal Cord
- Horizontal Deflection of Epiglottis-It covers Laryngeal Opening
- If food enters respiratory tract Cough, Choking, even death.
- Contraction of Superior Constrictor Muscle of Pharynx .

4. Pharynx -----→ Esophagus

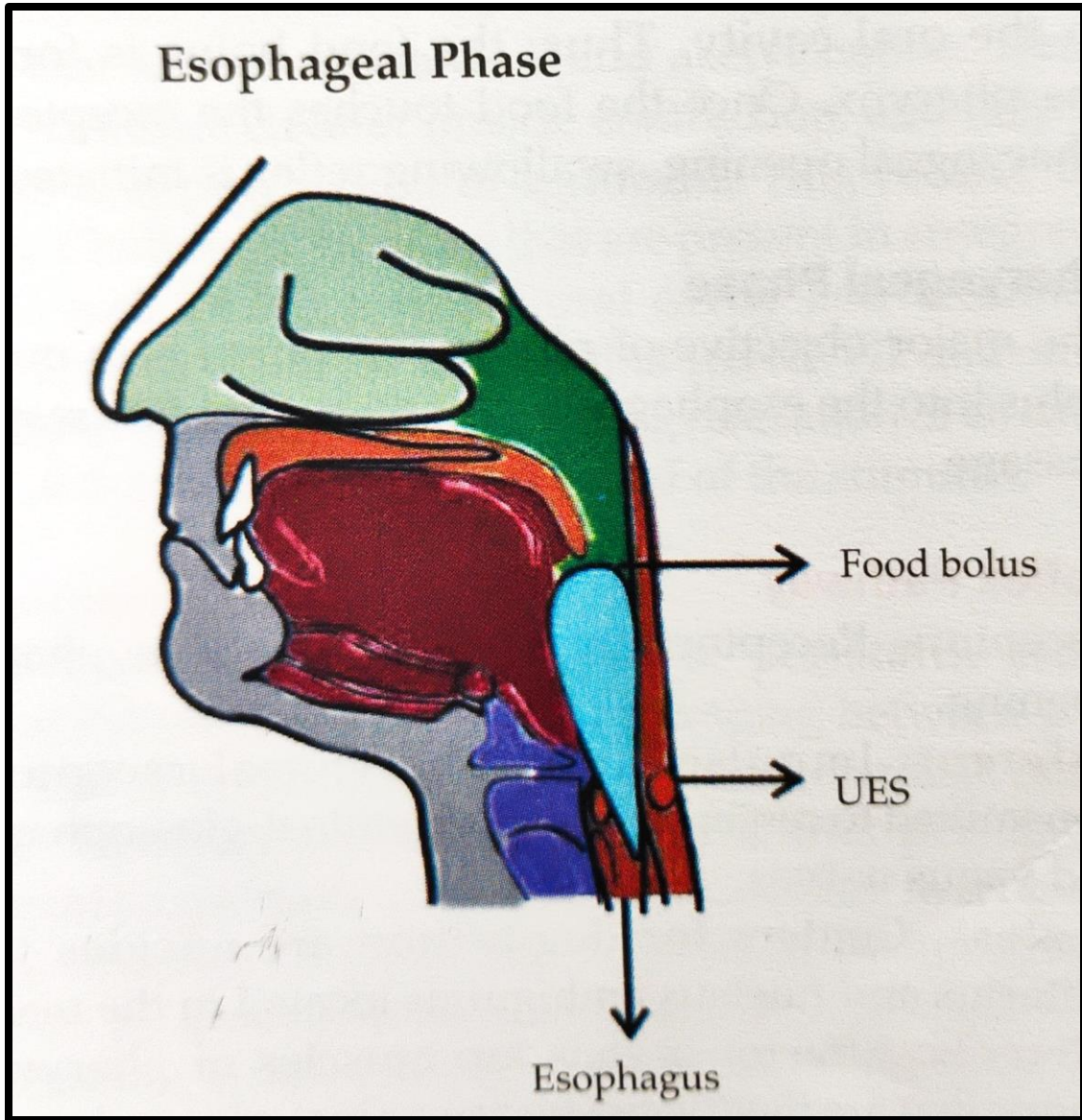
- By relaxing Upper esophageal sphincter





ESOPHAGEAL

- Pharynx To Stomach
- 2 Types of Movements
- First Degree Peristalsis(Primary P)
- A ring of Contraction Proximal To Bolus Food
- Portion Distal To Bolus Relaxes (receptive Relaxation)
- Second Degree Peristalsis



ESOPHAGEAL

- Result from distension Esophagus with Food
- Initiated by Enteric Nervous System & Long Vagovagal Reflex
- Lower 3-5 cm of Esophagus – Lower Esophageal Sphincter.
- Relaxation by Peristalsis via NO & VIP
- Tonic Spasm of LES Prevent Reflux of Gastric Contents to Esophagus
- Achalasia Cardia or Cardiospasm
- Dysphagia
- Odynophagia