

# LUNGS

## External features.

- Apex,
- base
- 2 Surfaces → Costal, medial
- 3 borders → ant, post, inferior

① apex: blunt, extends into root of neck

- lies 2.5cm above medial 1/3 of clavicle.
- covered by cervical pleura & supraclavicular membrane.

relations: Ant: Subclavian artery.

- Internal thoracic artery,
- Scalenus anterior.

posterior: Neck of first rib & structures in front of it.

Pancoast syndrome → due to involvement of structures behind apex → due to lung cancer on apex.

## ② Base.

- semilunar, concave, lies on base of diaphragm.
- right → deeper due to presence of liver on right side.

## Borders.

① Anterior border. • thin and sharp.

right lung → vertical.

left lung → has cardiac notch & tongue like - lingula below it.

- In area of Cardiac notch, heart is not covered by lens → area of superficial Cardiac dullness.

② posterior border: - thick and rounded.

C<sub>7</sub> - T<sub>10</sub> spine.

③ Inferior border.

- It is semilunar and separates base from costal & medial surface.

## Surfaces.

- Costal Surface → large, convex. covered by costal pleura & endothoracic fascia.

→ related to lateral thoracic wall.

- medial Surface → small posterior vertebral part. large anterior mediastinal part.

vertebral part → related to vertebral columns.

- mediastinal part → has hilum.

relations of mediastinal surface

— diagram — v.v. Impt. →

Right → larger, shorter, broader 700g.

Left → smaller, longer, narrower 650g.

## lobes and fissures.

• Right lung → 3 lobes → Superior, middle, inferior lobes  
2 fissures

• left lung → 2 lobes → superior, inferior lobes.  
1 fissure.

• Oblique fissure → Crosses posterior border 6cm below apex.

• and anterior border 7.5cm lateral to midline. almost at apex.

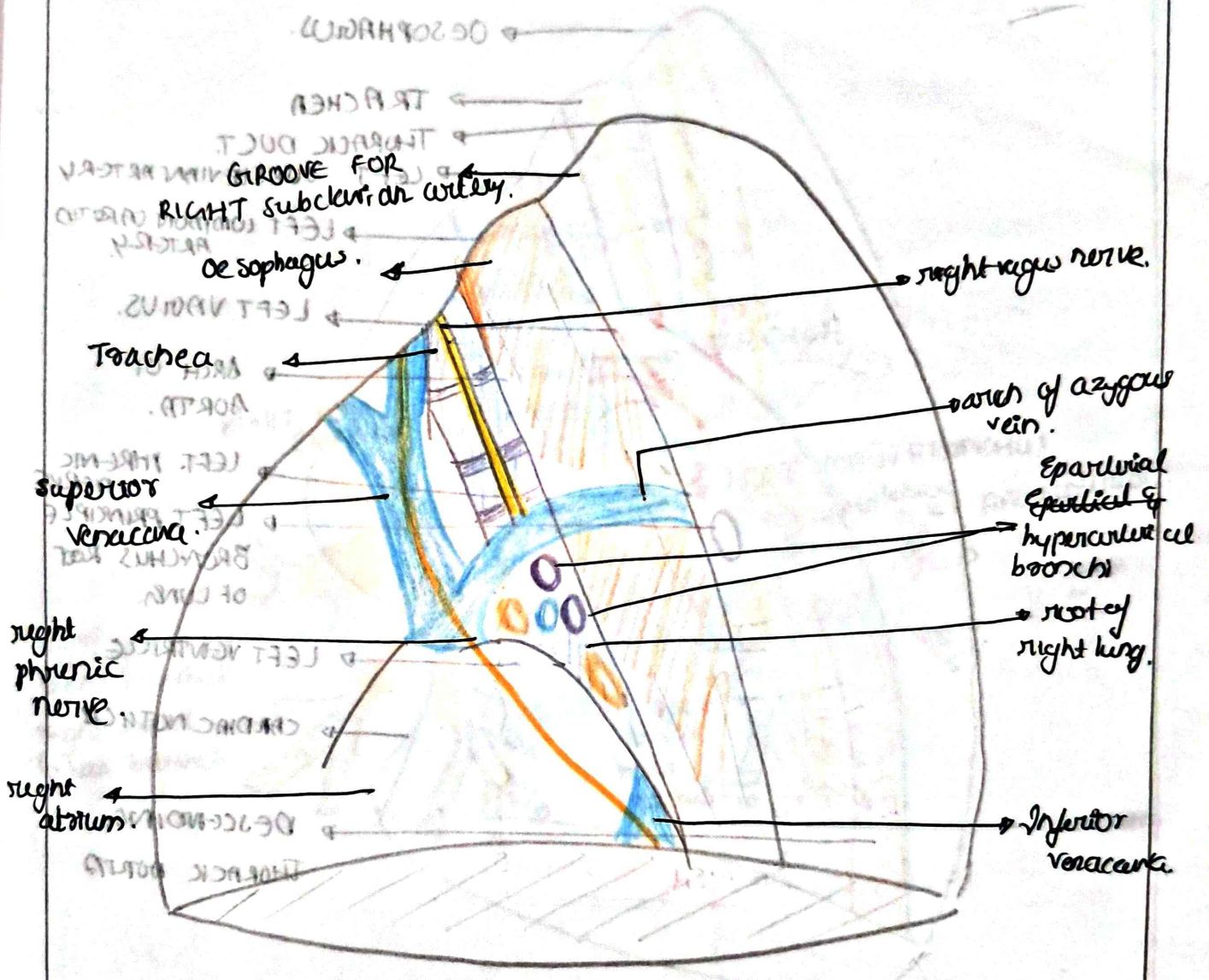
• horizontal fissure → Starts from oblique fissure at midaxillary line and runs to anterior border.

• only in right lung. ✨

## Surface Marking of Lungs

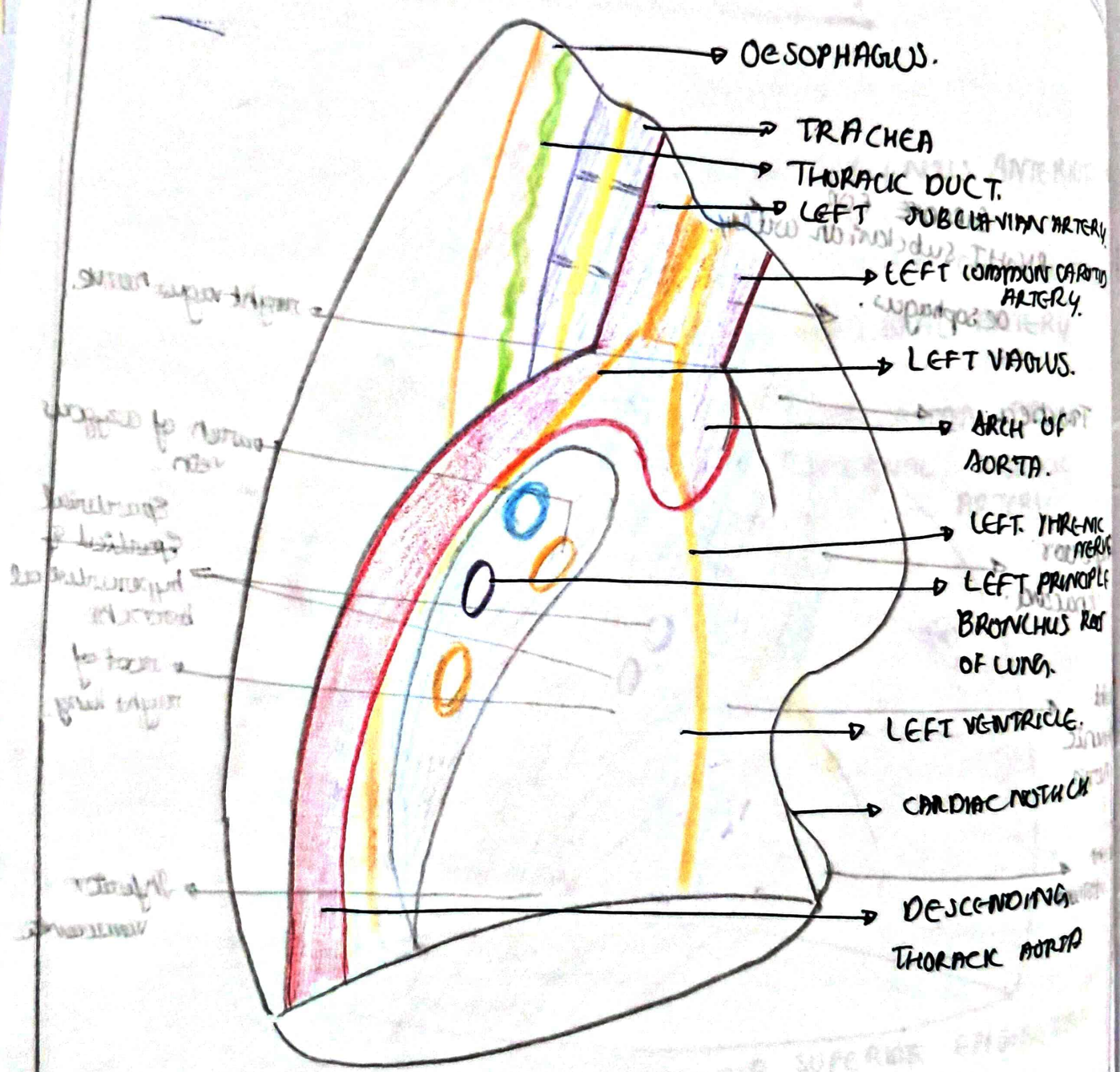
7/11/2023

# STRUCTURES RELATED TO MEDIASTINAL SURFACE OF RIGHT LUNG



7/11/2023

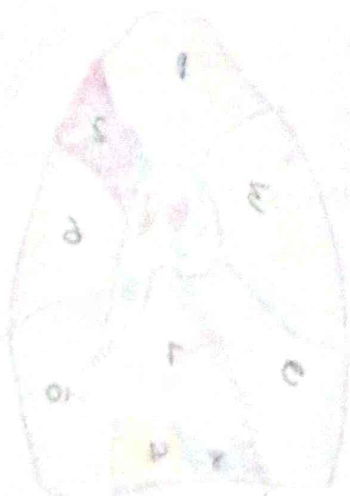
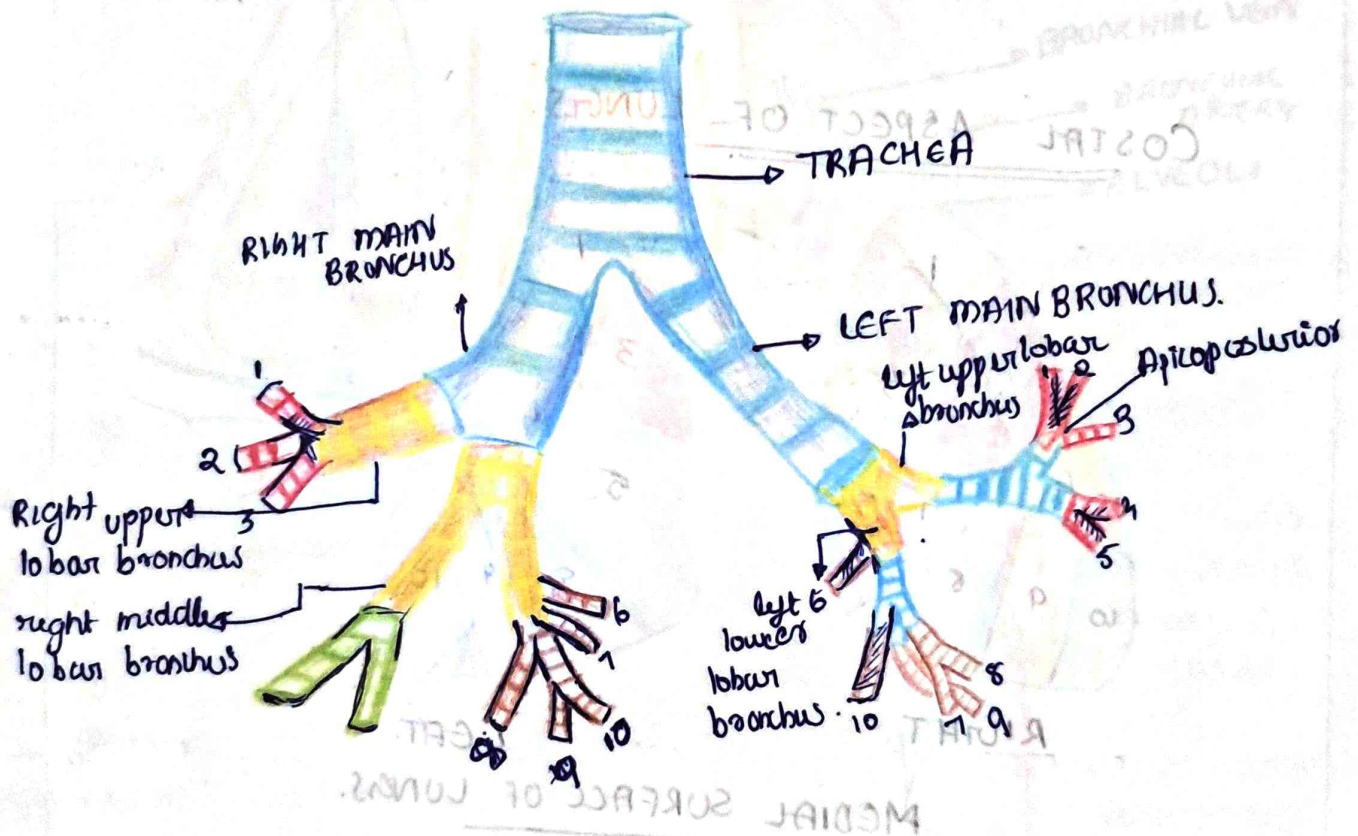
# STRUCTURES RELATED TO MEDIASTINAL SURFACE OF LEFT LUNG.



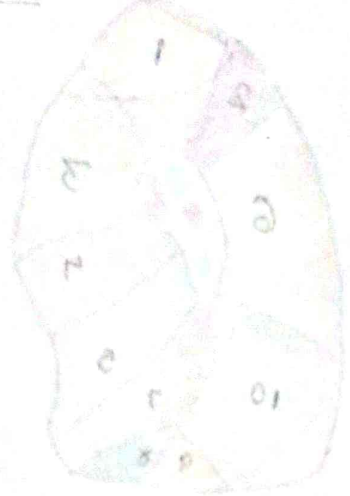
- OESOPHAGUS.
- TRACHEA
- THORACIC DUCT.
- LEFT SUBCLAVIAN ARTERY
- LEFT COMMON CAROTID ARTERY.
- LEFT VAGUS.
- ARCH OF AORTA.
- LEFT PULMONIC ARTERY
- LEFT PRINCIPLE BRONCHUS OF LUNG.
- LEFT VENTRICLE.
- CARDIAC NOTCH
- DESCENDING THORACIC AORTA

7/11/2023.

# BRONCHO PULMONARY SEGMENTS.



RIGHT



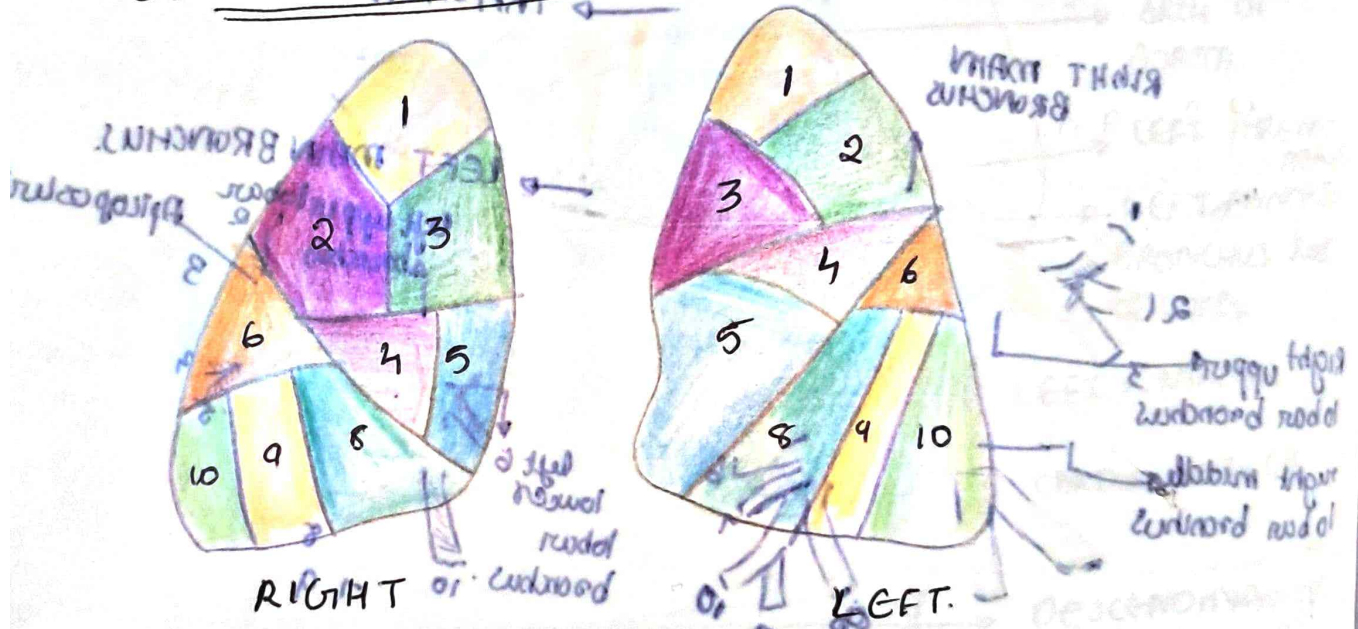
LEFT

1/2023.

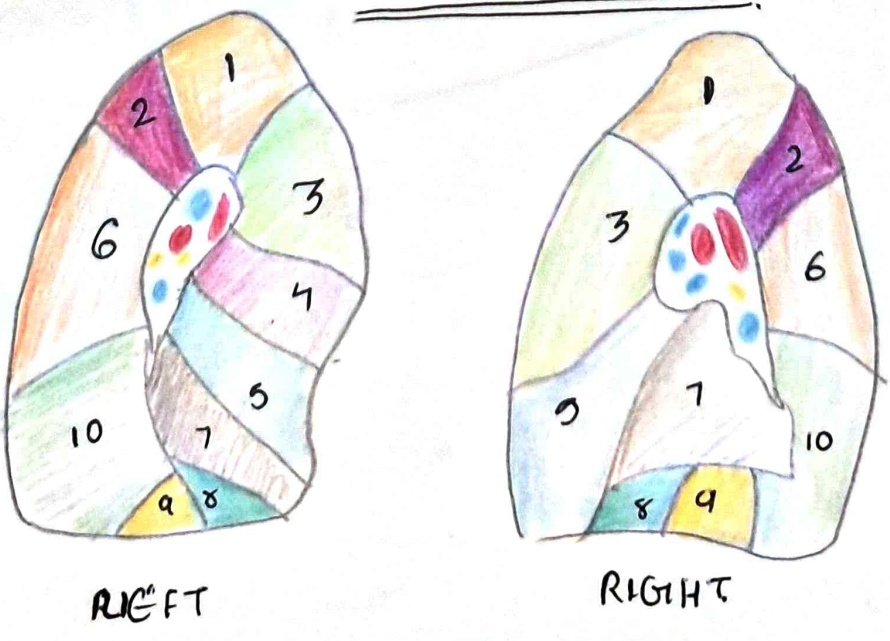
# BRONCHO PULMONARY SEGMENTS

1/1/2023

## COSTAL ASPECT OF LUNGS.



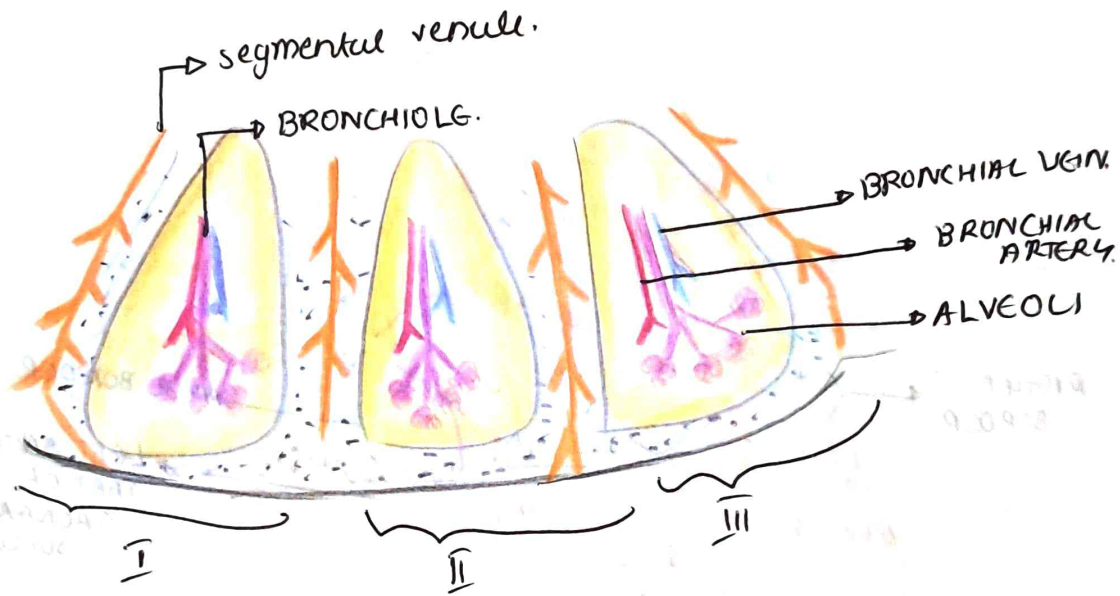
## MEDIAL SURFACE OF LUNGS.



7/11/2023

DEVELOPING

SEGMENTS



RIGHT  
POSTERIOR  
PORT OF  
SEGMENT  
2023

RIGHT  
POSTERIOR  
PORT OF  
SEGMENT  
2023

INTERIOR BORDER.  
PLX

INTERIOR BORDER.  
PLX