

# URETHRA

a tubular passage that transmits only urine in F and both urine & semen in M.

## MALE URETHRA

18-20cm long.

Extent → from Internal urethral orifice at neck of bladder to external UO at tip of glans penis.

flaccid state → S shaped.

erect state → J shaped.

## PARTS

- 1) prostatic part (through prostate)
- 2) Membranous part (through urogenital diaphragm)
- 3) spongy / penile part (corpus spongiosum of penis)

## PROSTATIC PART (3cm long)

- most widest & dilatable part of urethra
- fusiform in cross section.
- Inner aspect of posterior wall of prostatic urethra has the following features

features

← (prev pages).

urethral crest, collateral seminalis

one lacuna present in navicular fossa. urethral lacunae of Morgagni → everywhere except navicular fossa.

## MEMBRANOUS PART (2cm)

• traverses through urogenital diaphragm and pierces perineal membrane about 2.5cm below & behind pubic symphysis?

• surrounded by sphincter urethral muscle.

which serve as voluntary external sphincter of bladder.

• star shaped in cross section.

• narrowest & least dilatable part of urethra (apart from external urethral orifice).

• numerous mucous glands are found in it & open into it.

## Spongy part (15cm)

• within corpus spongiosum.

• 15cm

• bulb - trapezoid.

• body - transverse slit.

Evo - vertical slit.

2 dilatations

① bulb of penis → Intra-bulbar fossa

② In glans penis → navicular fossa.

→ urethral (Littre's gland) opens into entire spongy part except in navicular fossa

## URETHRAL MUCOSA

- prostatic urethra above seminal colliculus is lined by transitional epithelium, and below it by stratified columnar epithelium.
- membranous part → stratified columnar epithelium.
- spongy part → stratified columnar epithelium.
- but navicular fossa & external urethral orifice → stratified squamous epithelium.

### Applied aspect.

- ① Rupture of urethra → of @ bulb of penis → below urogenital diaphragm. Urine extravasates into.
- ↓
- Extravasation of urine.
- ↓
- Superficial perineal pouch, scrotum, penis, anterior part of Ant. Abdominal wall
- (Superficial Extravasation.)

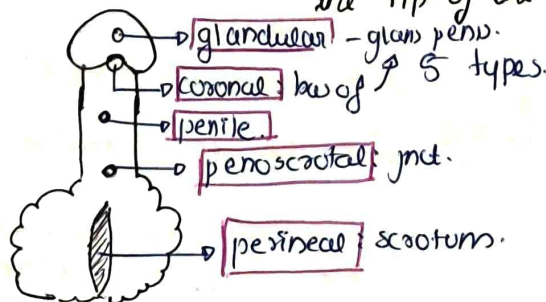
→ of above urogenital diaphragm.

→ passes around prostate & UB → in the extraperitoneal space.

(deep Extravasation)

### ② Catheterization of urethra.

- ③ Hypospadias → EVO → located in ventral aspect of penis instead at the tip of the glans penis



## Sphincters of Urethra.

- Internal & External.

### Internal

Surrounds internal.

U.O

From bladder  
musculature of  
trigonal region.

Involuntary

Voluntary.

### External.

Surrounds  
membranous part of  
Urethra.

derived from sphincter  
urethral muscle.

## Female Urethra:

4cm long.

It begins at IVO @ neck of bladder.

opens in vestibule of vagina ant. to vaginal orifice.

Shape → cross section

upper part → crescentic

middle part → star shaped.

lower part → transverse slit.

EVO → sagittal slit.

## Applied.

→ UTI → more common.

→ easy catheter.

