

1) Palmar aponeurosis (blue pin)



1) Palmar aponeurosis (blue pin)

Morphological significance

Function

Clinical significance



2) Radial artery (red tie)



2) Radial artery (red tie)

Posterior relations

Clinical importance

Branches

Structures present medial to it at wrist

1. Flexor carpi radialis



3) Ulnar nerve (white tie)



3) Ulnar nerve (white tie)

Muscles supplied by it in forearm

1. Flexor digitorum profundus – medial part
2. Flexor carpi ulnaris

Root value

C8-T1

Applied anatomy

Ulnar claw



4) Median nerve (green tie)



4) Median nerve (green tie)

Distribution in hand/forearm

Root value

C5-T1

Relations in cubital fossa

Medial – brachial artery

Lateral – biceps tendon

Clinical importance



5) Deltoid (green pin)



5) Deltoid (green pin)

Insertion – deltoid tuberosity

Nerve supply – axillary nerve

Action

Anterior fibres – flexion, medial rotation

Lateral fibres – abduction

Posterior fibres – extension, lateral rotation



6) Triceps tendon (long pink needle)



6) Triceps tendon (long pink needle)

Attachment
Nerve supply
Action



7) Axillary nerve (green tie)

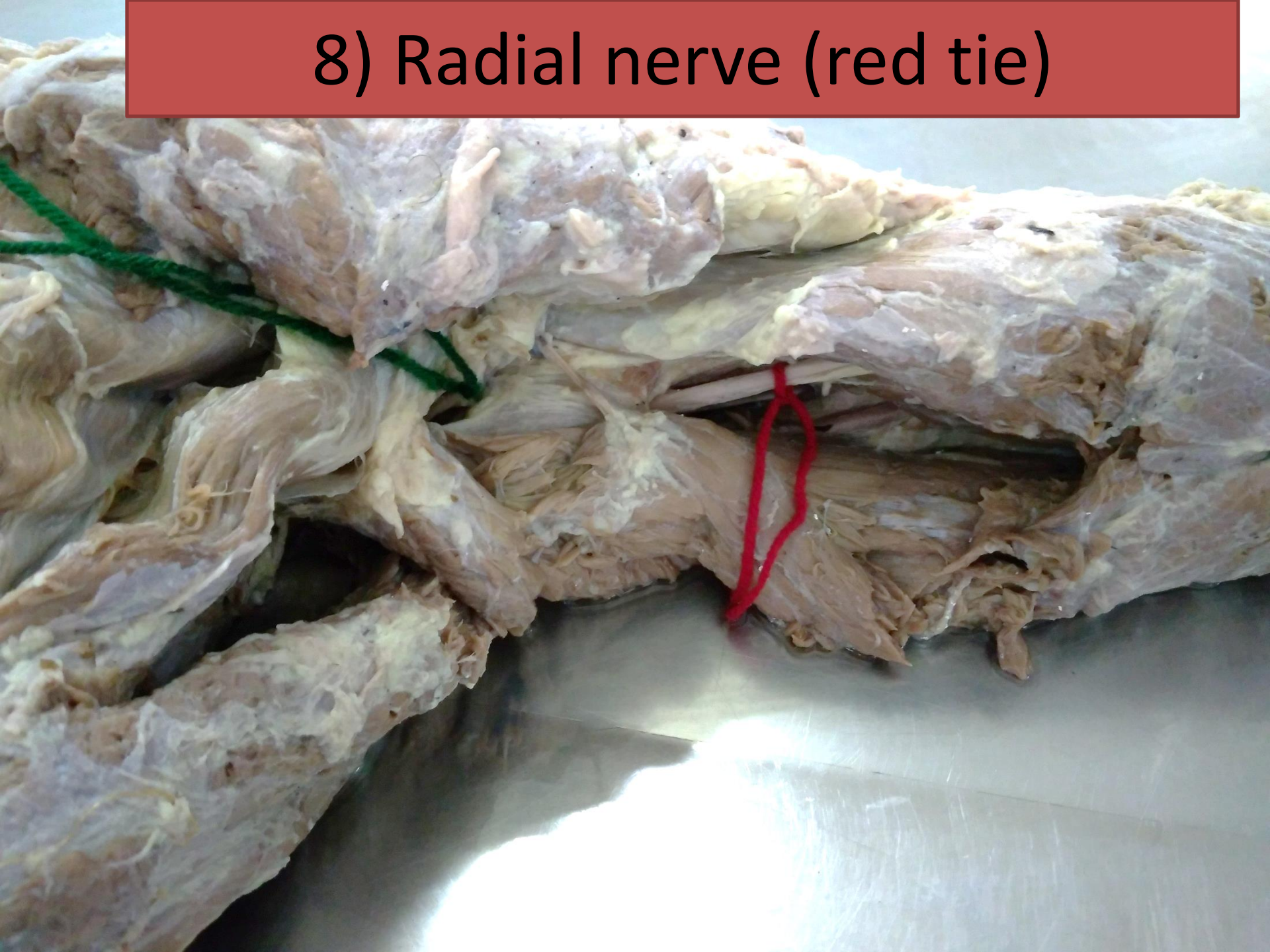


7) Axillary nerve (green tie)

Accompanying structure
Muscle supplied by it
Space passes through



8) Radial nerve (red tie)



8) Radial nerve (red tie)

Structure accompanying it

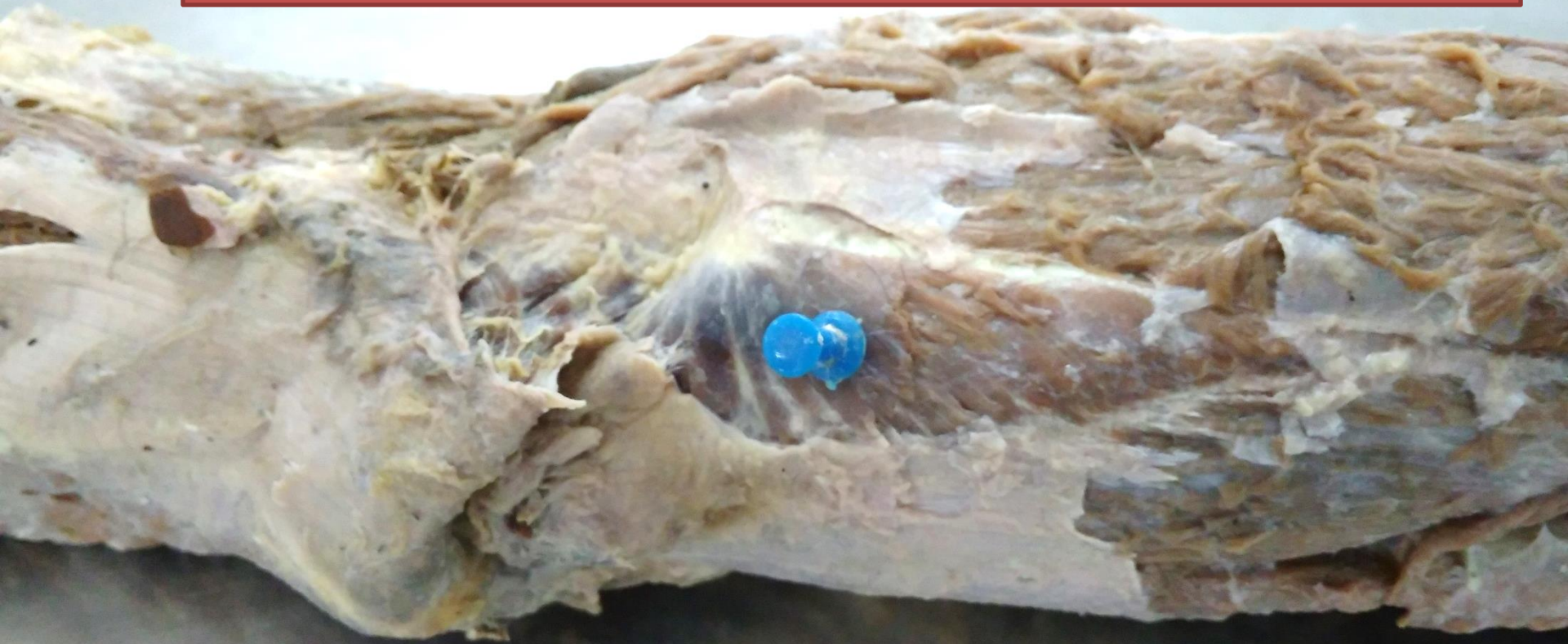
Root value

Muscles supplied by it in the spiral groove

Lesion caused by its injury in this area



9) Anconeus



9) Anconeus

Origin – lateral epicondyle

Insertion – olecranon process and adjoining upper $\frac{1}{4}$ of shaft of ulna

Nerve supply – radial nerve in the spiral groove



10) 1st dorsal interosseous



10) 1st dorsal interosseous

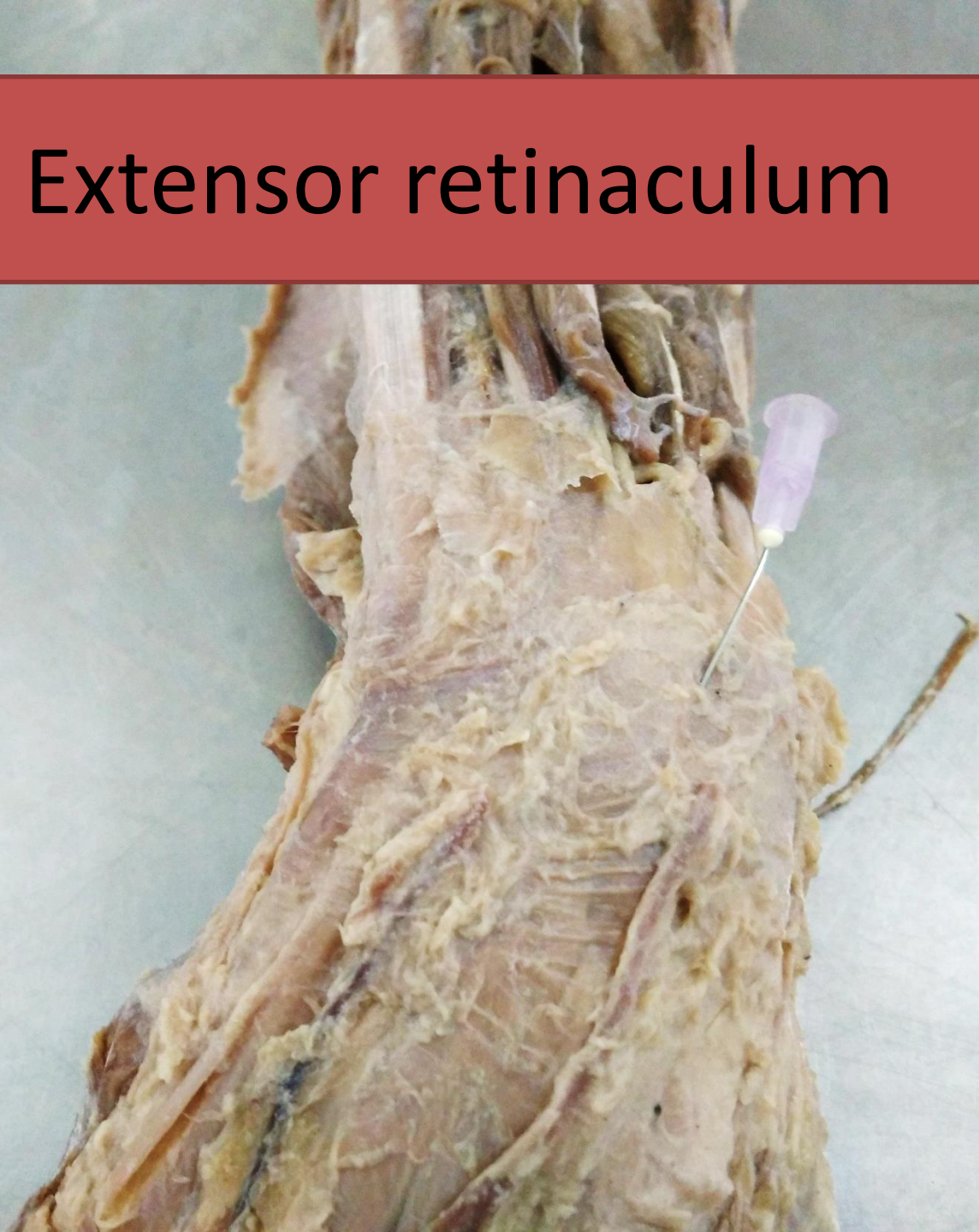
Nerve supply – Deep branch of ulnar

Action –

Pierced by – radial artery



11) Extensor retinaculum



11) Extensor retinaculum

Attachment

Structures passing through 4th compartment



12) Superficial palmar arch



12) Superficial palmar arch

Formation
Branches



13) Anterior interosseous nerve (green tie)



13) Anterior interosseous nerve (green tie)

- Origin
- Structures supplied by it
- Accompanying structure
- Posterior relations



14) Brachial artery



14) Brachial artery

- Extent
- Branches in the arm
- Applied anatomy



15) Pronator quadratus (pink pin)



15) Pronator quadratus (pink pin)

- Attachment
- Nerve supply
- Action



16) Axillary artery

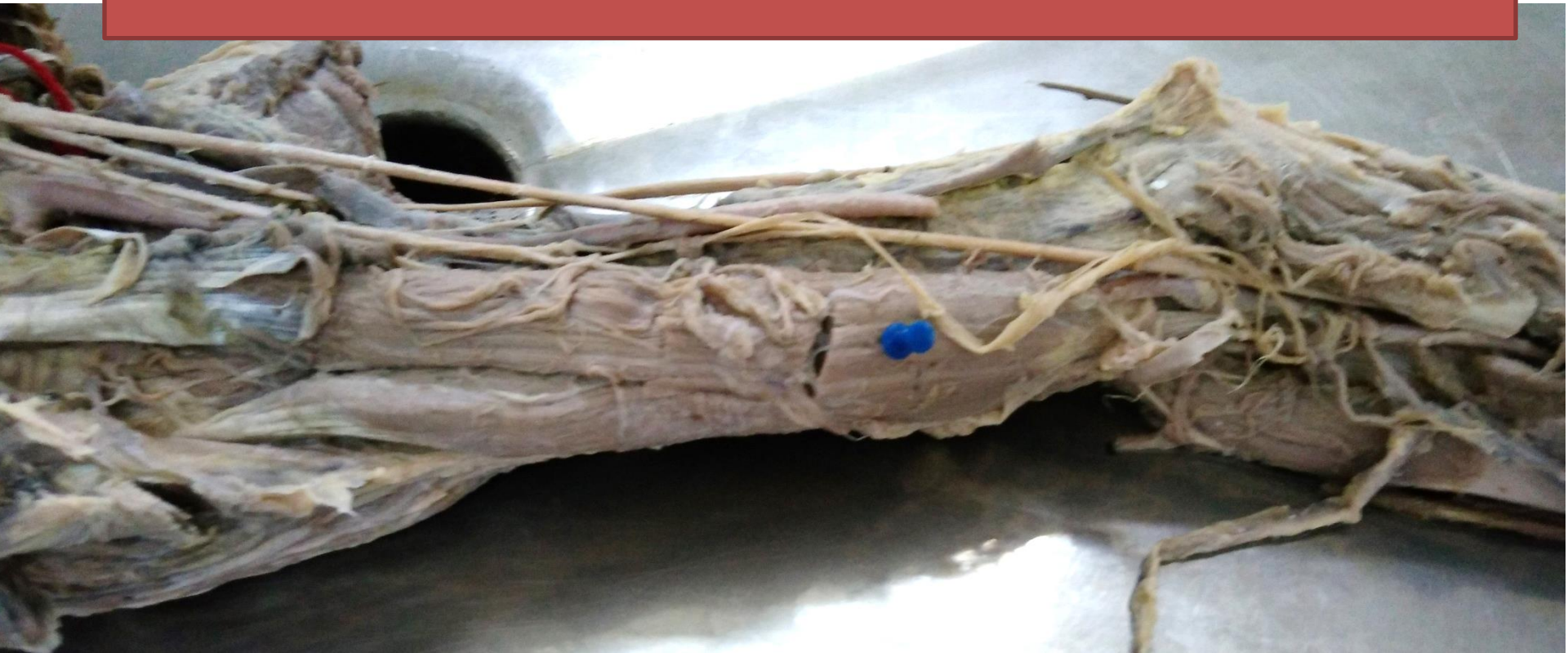


16) Axillary artery

- Extent
- Any 2 branches
- Muscle dividing it



17) Biceps brachii



17) Biceps brachii

- Attachment
- action



18) 1st lumbrical



18) 1st lumbrical

- Nerve supply
- Action
- Attachment



19) Ulnar artery



19) Ulnar artery

- Branches in cubital fossa
- Its continuation
- Medial relation at wrist

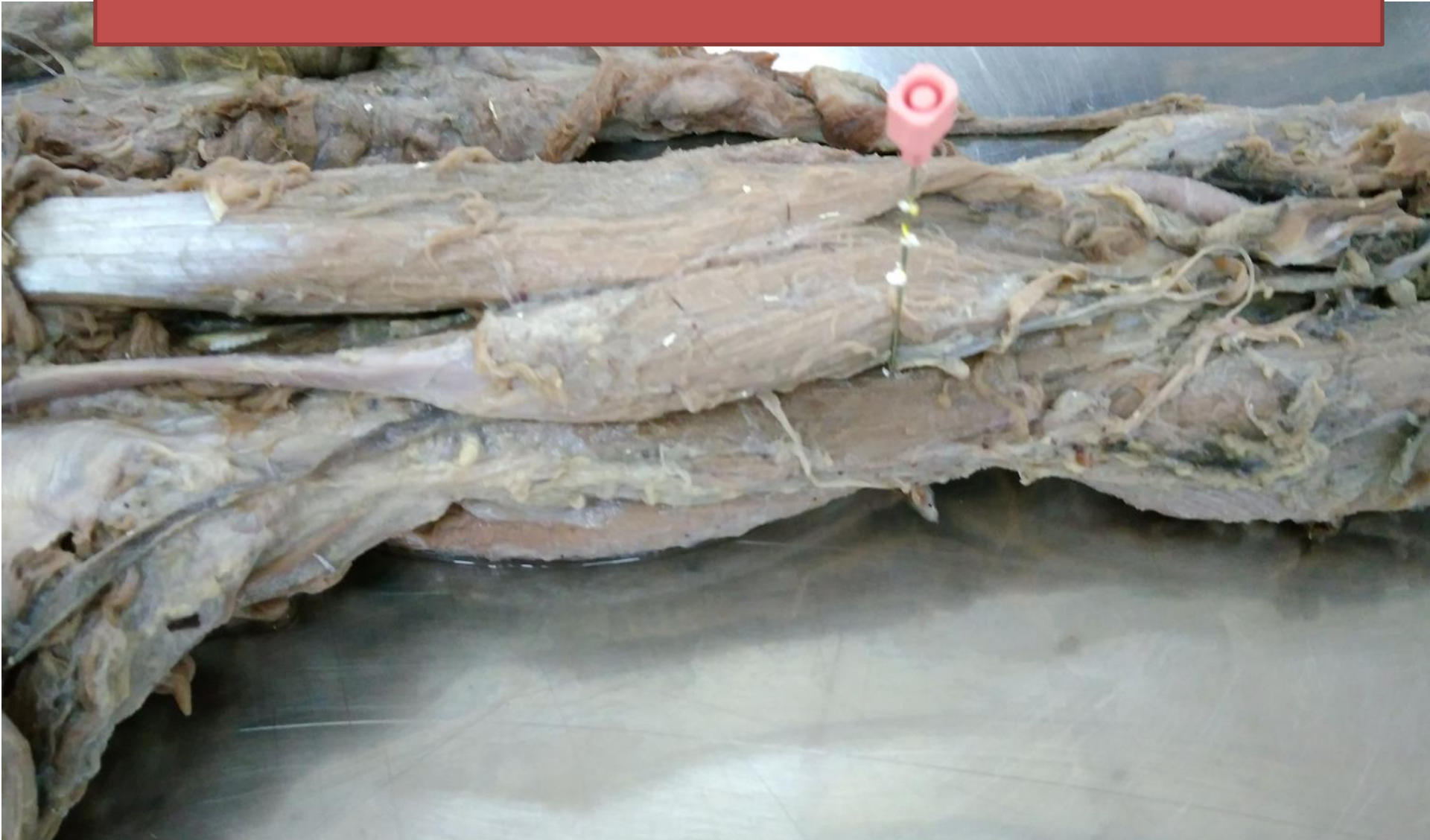


20) Cubital tunnel

- Structure passing through it
- Structure forming the probed area
- Clinical importance



21) Brachialis



21) brachialis

- Attachment
- Nerve supply
- Action



22) Anatomical snuff box (white pin)



22) Anatomical snuff box (white pin)

- Boundaries
- Content



23) Superficial branch of radial nerve



23) Superficial branch of radial nerve

- Distribution
- Medial relation in the distal part of forearm



24) Subscapularis (white pin)



24) Subscapularis (white pin)

- Attachment
- Nerve supply
- Action



25) Pronator teres



25) Pronator teres

- Attachment
- Nerve supply
- Action
- Structure passing between its 2 heads



26) Flexor retinaculum



26) Flexor retinaculum

- Attachment
- Structure passing superficial to it
- Structure passing deep to it
- Applied importance



27) Adductor pollicis



27) Adductor pollicis

- Action
- Attachment
- Nerve supply
- Structure piercing it



28) Cephalic vein



28) Cephalic vein

- Termination
- Formation
- Structure pierced by it in the pectoral region



29) Musculocutaneous nerve



29) Musculocutaneous nerve

- Structure pierced by it
- Muscles supplied by it
- Name the cutaneous branch given by it

